

000.620 PD - 008 - BILL OF MATERIALS 4 LITE

ITEM NO.	DESCRIPTION	QUANTITY	PART NO.	FAB DWG. NO	SOURCE
1	FXD PNL	2	10001102	10001102-F-01	A
2	TOP RAIL	4	10001102	10001102-F-01	A
3	STILE	2	10001102	10001102-F-02	A
4	BOTTOM RAIL	2	10001117	10001117-F-04	A
5	INTERLOCK	2	10001118	STRAIGHT CUT	A
6	SCREW COVER	8	10001111	10001111-F-01	A
7	GLAZING BEAD	2	10300150	STRAIGHT CUT	PPPP
8	STILE REINFORCEMENT - JAMB	2	10300150	STRAIGHT CUT	PPPP
9	STILE REINFORCEMENT - INTERLOCK	AS REQ'D	W21255MW		HHHH
10	WEATHER-STRIPPING - .270 x .250				
11	OPR PNL	2	10001102	10001102-F-01	A
12	RAIL - TOP	2	10001102	10001102-F-03	A
13	STILE - INTERLOCK	1	10001102	10001102-F-10	A
14	STILE - ACTIVE LOCK	1	10001102	10001102-F-16	A
15	STILE - PASSIVE LOCK	2	10001102	10001102-F-05	A
16	RAIL - BOTTOM	1	10001116	10001116-F-01	A
17	4 LITE ASTRAGAL	2	10001117	10001117-F-02	A
18	INTERLOCK	2	10001118	STRAIGHT CUT	A
19	SCREW COVER	8	10001111	10001111-F-01	A
20	GLAZING BEAD	2	10300151	STRAIGHT CUT	PPPP
21	STILE REINFORCEMENT - INTERLOCK	1	10300150	STRAIGHT CUT	PPPP
22	STILE REINFORCEMENT - ACTIVE LOCK	1	10300151	10300151-F-01	PPPP
23	STILE REINFORCEMENT - PASSIVE LOCK	2	10300152	10300152-F-01	PPPP
24	RAIL REINFORCEMENT - BOTTOM	AS REQ'D			HHHH
25	WEATHER-STRIPPING - .270 x .250				
26	MISC	1	DECU-XXX4		F
27	LOCK SET ASSEMBLY - 2817 LOCK W/ TRIMPLATE	2			F
28	HANDLE SET ASSEMBLY				
29	HANDLE SET - INTERIOR SWITCH		DECU-XXX1		
30	HANDLE SET - INTERIOR SWITCH / KEY		DECU-XXX2		
31	HANDLE SET - BLANK		DECU-XXX3		
32	ROLLER ASSEMBLY - PRECISION 1.66" WHEEL	4	1988PRST66REVSS		F
33	DRAFT PLUG - .810 DIA.	4	D6096AMWKC 0.810		HHHH
34	3/8" HOLE PLUG	4	9946		D
35	KEEPER - 2778 KEEPER - STAINLESS STEEL	1	DECU-2808-84		F
36	IMPACT BRACKET	5	011H055-D		MMMM
37	1" INSULATED GLASS - NOTE	4			
38	SETTING BLOCKS (REFER TO IS SUPPLIER GUIDELINES)	AS REQ'D			
39	GLAZING COMPOUND	AS REQ'D			
40	SCREWS	4	#10 x 1.25" PFH - 410SS		
41	LOCK SET	8	#8 x 3/4" PPH - 410SS		
42	ROLLER ASSEMBLY	AS REQ'D	#8 x 1" PFH - 410SS		
43	REINFORCEMENT TO PANEL	AS REQ'D	#8 x 5/8" PPH - 410SS		
44	INTERLOCK	AS REQ'D	#8 x 2" PPH - PAINTED		
45	4 LITE ASTRAGAL	4	#8 x 3" PPH - 410SS		
46	KEEPER	15	#8 x 2.5" PFH - PAINTED		
47	IMPACT BRACKET				


  
**ARCHITECTURAL DIVISION**
  
 7252 NARCOOSSEE ROAD
   
 ORLANDO, FLORIDA 32822
   
 CTLA No. **2084w - 2084w-1**
  
 Date Verified: **5/21/10**

NOTE: LAMINATED GLASS UTILIZES .090" SOLUTIA PVB	
REV	DESCRIPTION
DATE	BY

Verified By: **deceuninck**
  
 NORTH AMERICA
   
 MONROE, OH
   
 NAME: 000.620 PD - 008
   
 DWN BY: JGM
   
 CHG BY:
   
 DWG NO: 000620PD-008
   
 COPY/RIGHT 2010

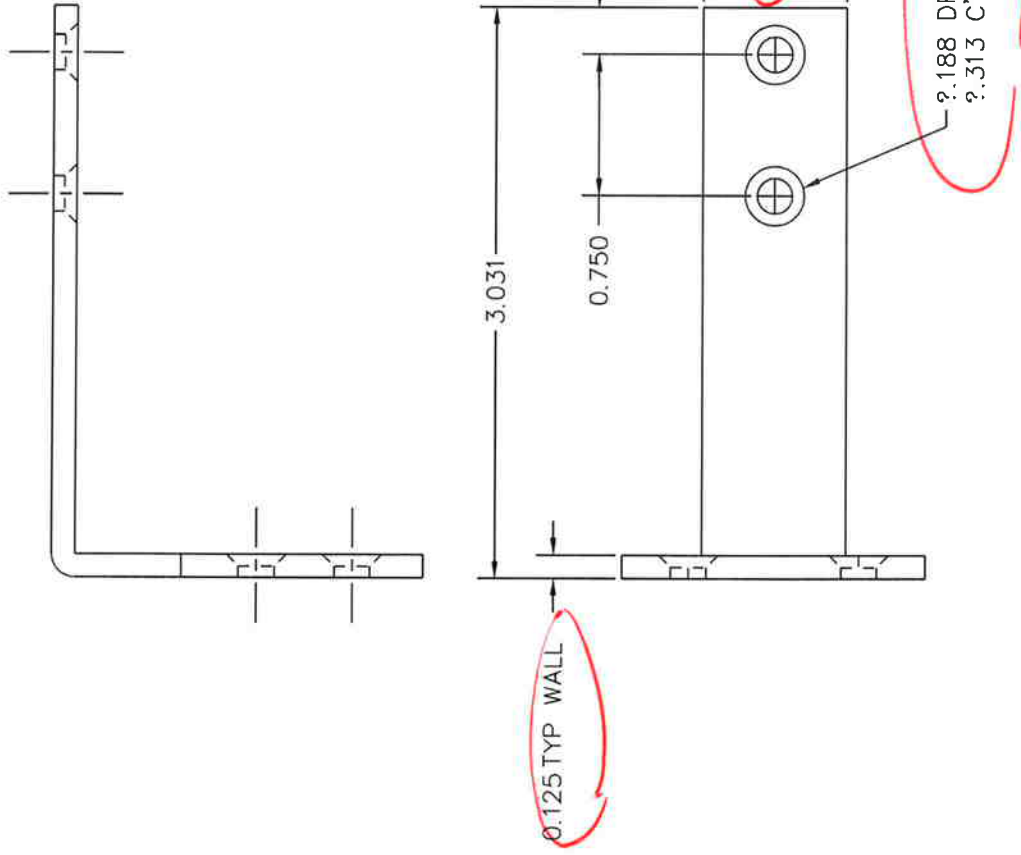
CONFIDENTIAL
   
 UNPUBLISHED WORK © 2010
   
 DECEUNINCK NORTH AMERICA

THIS MATERIAL IS PROPRIETARY & CONFIDENTIAL TO VINYL BUILDING PRODUCTS INC. & SHALL NOT BE REPRODUCED, COPIED OR DISSEMINATED WITHOUT THE EXPRESSED WRITTEN PERMISSION OF VINYL BUILDING PRODUCTS INCORPORATED

A 011H027



CTLA No. 2654w + w1  
 Date Verified: 5/21/10  
 Verified By: [Signature]



© VINYL BUILDING PRODUCTS INC.

AREA =  
 WEIGHT =  
 TOLERANCES (EXCEPT AS NOTED)  
 ±0.010

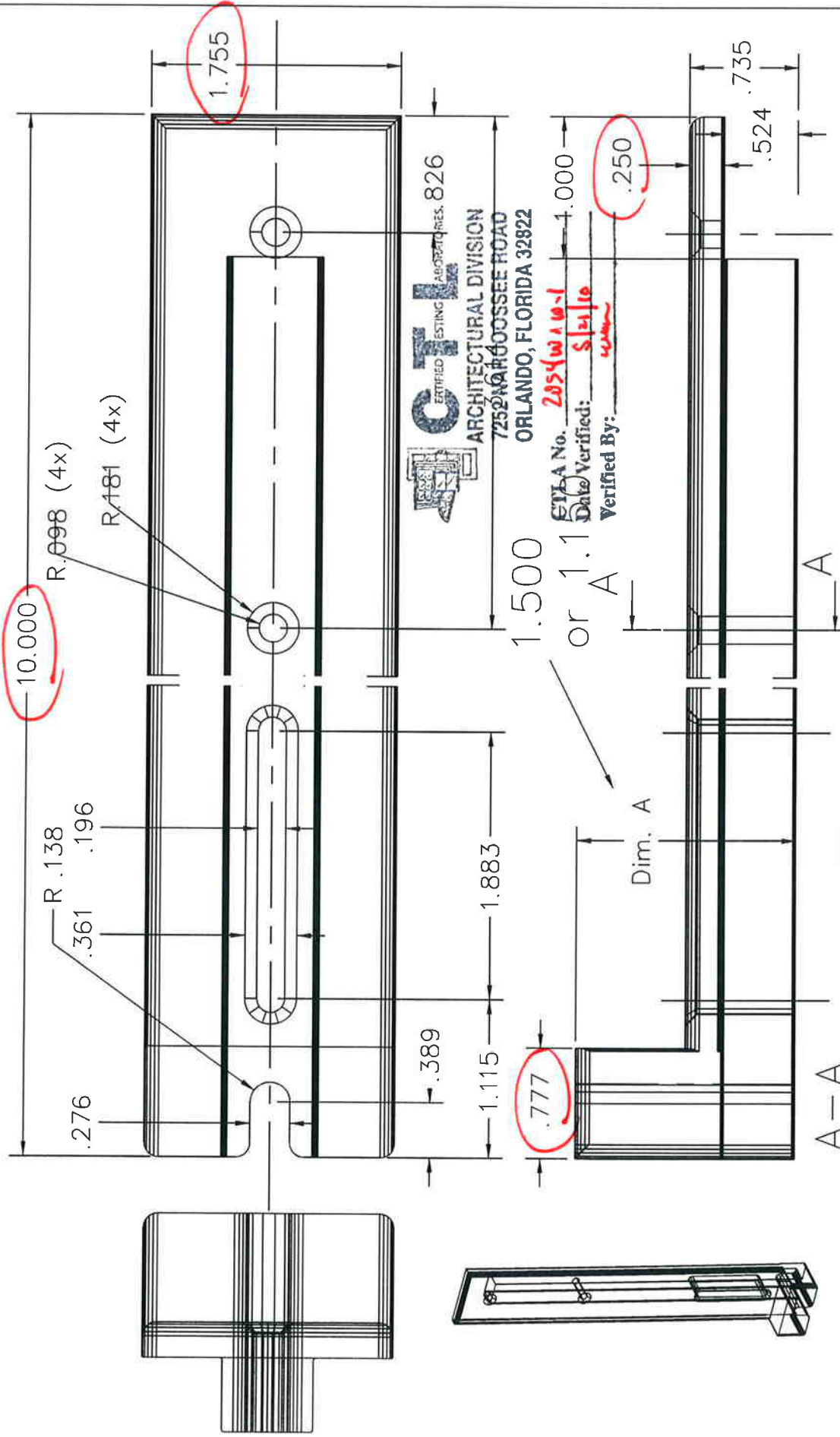
DRAWN MG DATE 10/29/01 APPV'D MAT'L 6063-T6 SCALE 1/1

BRACKET 011H027

REV	BY	APPV'D	DATE	CHANGE
-----	----	--------	------	--------

THIS MATERIAL IS PROPRIETARY & CONFIDENTIAL TO VINYL BUILDING PRODUCTS INC. & SHALL NOT BE REPRODUCED, COPIED OR DISSEMINATED WITHOUT THE EXPRESSED WRITTEN PERMISSION OF VINYL BUILDING PRODUCTS INCORPORATED.

A 011h055-D




**OTI**  
 CERTIFIED TESTING LABORATORY RES. 826  
 ARCHITECTURAL DIVISION  
 7252 N. HOOVER ROAD  
 ORLANDO, FLORIDA 32822

ETA No. 2054 w a w-1  
 Date Verified: 5/21/10  
 Verified By: www



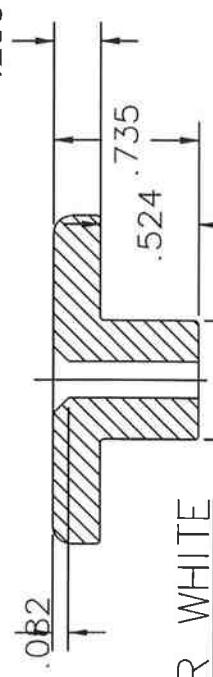
© VINYL BUILDING PRODUCTS INC.

AREA = 8.109 cub in  
 WEIGHT = ±0.010  
 TOLERANCES (EXCEPT AS NOTED)

DRAWN	MG	DATE	APPVD	MAT'L	NYLON	SCALE
		2/25/05				1/1

BRACKET

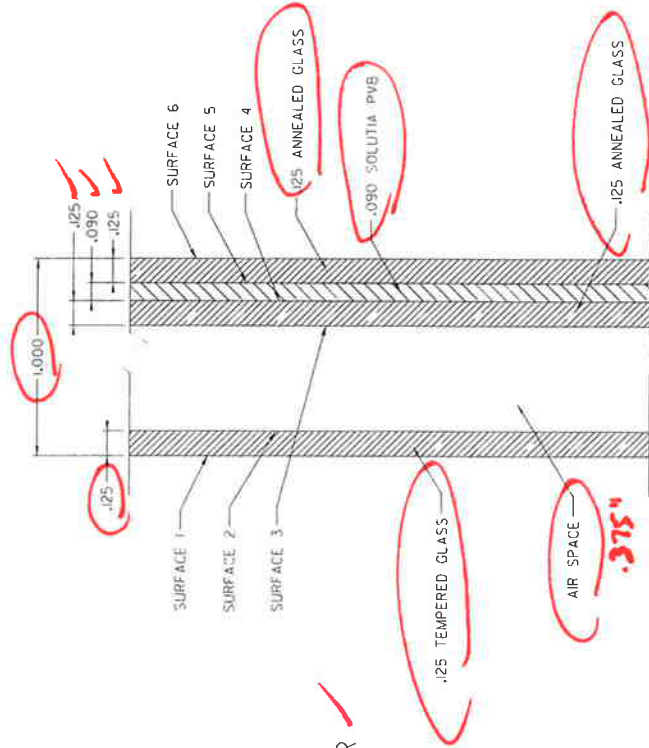
011h055-D



COLOR WHITE

REV	BY	APPVD	DATE	CHANGE

CAD MAINTAINED. CHANGES SHALL BE INCORPORATED BY THE DESIGN ACTIVITY.



EXTERIOR ✓

INTERIOR ✓



**ARCHITECTURAL DIVISION**  
**7252 NARCOOSSEE ROAD**  
**ORLANDO, FLORIDA 32822**

CTLA No. 2054w + 2054w-1

Date Verified: 5/21/10

Verified By: [Signature]

1" OVERALL LAMIANTE IG ✓  
 1/8" ANNEALED PANELS WITH ✓  
 .090" SOLTUTIA PVB ✓

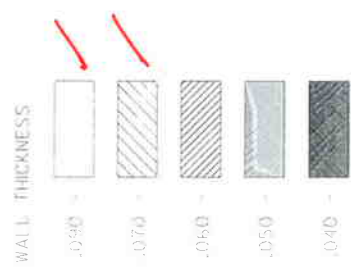
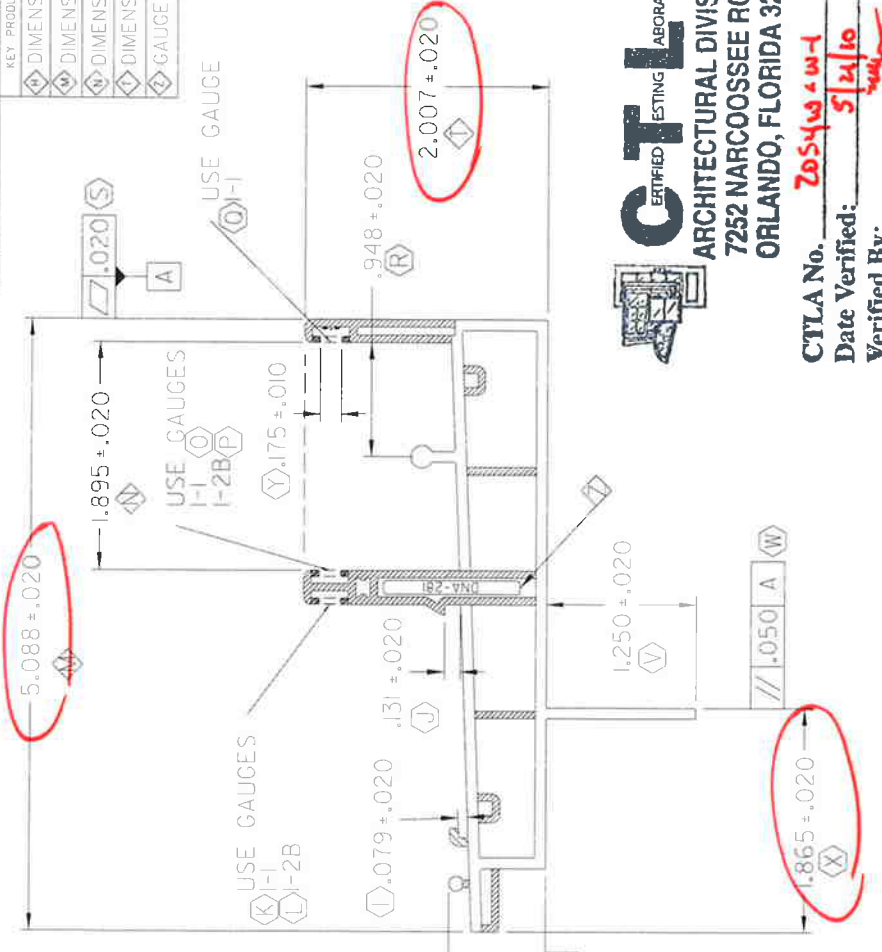
<b>CONFIDENTIAL</b> UNPUBLISHED WORK © 2008 DECEUNINCK NORTH AMERICA	UNLESS OTHERWISE SPECIFIED DIM ARE IN INCHES 2 PL. = 0.007" 1 PL. = 0.005" INTERFERE WITH DIM. PER ASME Y14.5M - 1994	DESIGN BY: _____ DATE: _____	DECEUNINCK NORTH AMERICA
	THIRD ANGLE PROJECTION	DRAWN BY: <u>GM</u> DATE: <u>1/25/09</u>	NAME: _____
THIS DOCUMENT CONTAINS PROPRIETARY AND CONFIDENTIAL INFORMATION. DO NOT COPY OR DISCLOSE THIS INFORMATION WITHOUT THE WRITTEN PERMISSION OF DECEUNINCK NORTH AMERICA. DECEUNINCK NORTH AMERICA RESERVES THE RIGHT TO CHANGE THIS DRAWING AND ANY ASSOCIATED DOCUMENTS.		DATE: _____ DATE: _____ DATE: _____ DATE: _____	1" IG - .090 INNER LAYER
		PERFORMED BY: _____ DATE: _____	SCALE: _____ SHEET: _____



REV	DESCRIPTION	DATE	APPROVED
H	CHANGED DATUM A TO THE SIDE	11/05/05	BWB

REVISION HISTORY	
KEY PRODUCT CHARACTERISTICS	
◇ DIMENSION	.782 - .822
◇ DIMENSION	5.068 - 5.108
◇ DIMENSION	1.875 - 1.915
◇ DIMENSION	1.987 - 2.207
◇ GAUGE	DNA-281

CAD MAINTAINED. CHANGES SHALL BE INCORPORATED BY THE DESIGN ACTIVITY.



**CTI** ESTING LABORATORIES  
**ARCHITECTURAL DIVISION**  
 7252 NARCOOSSEE ROAD  
 ORLANDO, FLORIDA 32822

CTLA No. **205410 + w-1**  
 Date Verified: **5/21/10**  
 Verified By: **[Signature]**

DESIGN BY:	RJC
DATE:	00/10/20
DRAWN BY:	RJC
DATE:	00/10/20
AUTH:	
DATE:	
AUTH:	
DATE:	
FILENAME:	106770.DGN

DESIGN BY:	RJC
DATE:	00/10/20
DRAWN BY:	RJC
DATE:	00/10/20
AUTH:	
DATE:	
AUTH:	
DATE:	
FILENAME:	106770.DGN

**CONFIDENTIAL**  
 UNPUBLISHED WORK © 2011  
 DECEUNINCK NORTH AMERICA  
 THIS DOCUMENT CONTAINS PROPRIETARY AND CONFIDENTIAL INFORMATION. DO NOT COPY OR DISCLOSE THIS INFORMATION WITHOUT THE EXPRESS WRITTEN CONSENT OF DECEUNINCK NORTH AMERICA. DECEUNINCK NORTH AMERICA RESERVES THE RIGHT TO CHANGE THIS DRAWING AND ANY ASSOCIATED DOCUMENTS.

- NOTES:
1. 'STD00013' STRAIGHTNESS CLASS A AND LENGTH TOLERANCES APPLY (A)
  2. INTERPRET ALL TOLERANCE APPLICATIONS PER STD00013 (B)
  3. UNSPECIFIED EXTERNAL RADII = .XXX +.010 / -.005 (C)
  4. UNSPECIFIED INTERNAL RADII = .XXX +.020 / -.005 (D)
  5. UNSPECIFIED EXTERNAL WALL THICKNESS = .XXX +/- .07 (E)
  6. UNSPECIFIED INTERNAL WALL THICKNESS = .XXX +/- .20 (F)

UNLESS OTHERWISE SPECIFIED  
 TOLERANCES ARE IN INCHES  
 2 PL: ± 0.010, 3 PL: ± 0.005  
 INTERPRET DIM AND TOL PER  
 ASME Y14.5M - 1994  
 THIRD ANGLE PROJECTION

DESIGN BY:	RJC
DATE:	00/10/20
DRAWN BY:	RJC
DATE:	00/10/20
AUTH:	
DATE:	
AUTH:	
DATE:	
FILENAME:	106770.DGN

UNLESS OTHERWISE SPECIFIED  
 TOLERANCES ARE IN INCHES  
 2 PL: ± 0.010, 3 PL: ± 0.005  
 INTERPRET DIM AND TOL PER  
 ASME Y14.5M - 1994  
 THIRD ANGLE PROJECTION

DESIGN BY:	RJC
DATE:	00/10/20
DRAWN BY:	RJC
DATE:	00/10/20
AUTH:	
DATE:	
AUTH:	
DATE:	
FILENAME:	106770.DGN

UNLESS OTHERWISE SPECIFIED  
 TOLERANCES ARE IN INCHES  
 2 PL: ± 0.010, 3 PL: ± 0.005  
 INTERPRET DIM AND TOL PER  
 ASME Y14.5M - 1994  
 THIRD ANGLE PROJECTION

DESIGN BY:	RJC
DATE:	00/10/20
DRAWN BY:	RJC
DATE:	00/10/20
AUTH:	
DATE:	
AUTH:	
DATE:	
FILENAME:	106770.DGN

UNLESS OTHERWISE SPECIFIED  
 TOLERANCES ARE IN INCHES  
 2 PL: ± 0.010, 3 PL: ± 0.005  
 INTERPRET DIM AND TOL PER  
 ASME Y14.5M - 1994  
 THIRD ANGLE PROJECTION

DESIGN BY:	RJC
DATE:	00/10/20
DRAWN BY:	RJC
DATE:	00/10/20
AUTH:	
DATE:	
AUTH:	
DATE:	
FILENAME:	106770.DGN

UNLESS OTHERWISE SPECIFIED  
 TOLERANCES ARE IN INCHES  
 2 PL: ± 0.010, 3 PL: ± 0.005  
 INTERPRET DIM AND TOL PER  
 ASME Y14.5M - 1994  
 THIRD ANGLE PROJECTION

DESIGN BY:	RJC
DATE:	00/10/20
DRAWN BY:	RJC
DATE:	00/10/20
AUTH:	
DATE:	
AUTH:	
DATE:	
FILENAME:	106770.DGN

UNLESS OTHERWISE SPECIFIED  
 TOLERANCES ARE IN INCHES  
 2 PL: ± 0.010, 3 PL: ± 0.005  
 INTERPRET DIM AND TOL PER  
 ASME Y14.5M - 1994  
 THIRD ANGLE PROJECTION

DESIGN BY:	RJC
DATE:	00/10/20
DRAWN BY:	RJC
DATE:	00/10/20
AUTH:	
DATE:	
AUTH:	
DATE:	
FILENAME:	106770.DGN

UNLESS OTHERWISE SPECIFIED  
 TOLERANCES ARE IN INCHES  
 2 PL: ± 0.010, 3 PL: ± 0.005  
 INTERPRET DIM AND TOL PER  
 ASME Y14.5M - 1994  
 THIRD ANGLE PROJECTION

DESIGN BY:	RJC
DATE:	00/10/20
DRAWN BY:	RJC
DATE:	00/10/20
AUTH:	
DATE:	
AUTH:	
DATE:	
FILENAME:	106770.DGN

UNLESS OTHERWISE SPECIFIED  
 TOLERANCES ARE IN INCHES  
 2 PL: ± 0.010, 3 PL: ± 0.005  
 INTERPRET DIM AND TOL PER  
 ASME Y14.5M - 1994  
 THIRD ANGLE PROJECTION

DESIGN BY:	RJC
DATE:	00/10/20
DRAWN BY:	RJC
DATE:	00/10/20
AUTH:	
DATE:	
AUTH:	
DATE:	
FILENAME:	106770.DGN

UNLESS OTHERWISE SPECIFIED  
 TOLERANCES ARE IN INCHES  
 2 PL: ± 0.010, 3 PL: ± 0.005  
 INTERPRET DIM AND TOL PER  
 ASME Y14.5M - 1994  
 THIRD ANGLE PROJECTION

DESIGN BY:	RJC
DATE:	00/10/20
DRAWN BY:	RJC
DATE:	00/10/20
AUTH:	
DATE:	
AUTH:	
DATE:	
FILENAME:	106770.DGN

UNLESS OTHERWISE SPECIFIED  
 TOLERANCES ARE IN INCHES  
 2 PL: ± 0.010, 3 PL: ± 0.005  
 INTERPRET DIM AND TOL PER  
 ASME Y14.5M - 1994  
 THIRD ANGLE PROJECTION

DESIGN BY:	RJC
DATE:	00/10/20
DRAWN BY:	RJC
DATE:	00/10/20
AUTH:	
DATE:	
AUTH:	
DATE:	
FILENAME:	106770.DGN

UNLESS OTHERWISE SPECIFIED  
 TOLERANCES ARE IN INCHES  
 2 PL: ± 0.010, 3 PL: ± 0.005  
 INTERPRET DIM AND TOL PER  
 ASME Y14.5M - 1994  
 THIRD ANGLE PROJECTION

DESIGN BY:	RJC
DATE:	00/10/20
DRAWN BY:	RJC
DATE:	00/10/20
AUTH:	
DATE:	
AUTH:	
DATE:	
FILENAME:	106770.DGN

UNLESS OTHERWISE SPECIFIED  
 TOLERANCES ARE IN INCHES  
 2 PL: ± 0.010, 3 PL: ± 0.005  
 INTERPRET DIM AND TOL PER  
 ASME Y14.5M - 1994  
 THIRD ANGLE PROJECTION

DESIGN BY:	RJC
DATE:	00/10/20
DRAWN BY:	RJC
DATE:	00/10/20
AUTH:	
DATE:	
AUTH:	
DATE:	
FILENAME:	106770.DGN

UNLESS OTHERWISE SPECIFIED  
 TOLERANCES ARE IN INCHES  
 2 PL: ± 0.010, 3 PL: ± 0.005  
 INTERPRET DIM AND TOL PER  
 ASME Y14.5M - 1994  
 THIRD ANGLE PROJECTION

DESIGN BY:	RJC
DATE:	00/10/20
DRAWN BY:	RJC
DATE:	00/10/20
AUTH:	
DATE:	
AUTH:	
DATE:	
FILENAME:	106770.DGN

UNLESS OTHERWISE SPECIFIED  
 TOLERANCES ARE IN INCHES  
 2 PL: ± 0.010, 3 PL: ± 0.005  
 INTERPRET DIM AND TOL PER  
 ASME Y14.5M - 1994  
 THIRD ANGLE PROJECTION

DESIGN BY:	RJC
DATE:	00/10/20
DRAWN BY:	RJC
DATE:	00/10/20
AUTH:	
DATE:	
AUTH:	
DATE:	
FILENAME:	106770.DGN

UNLESS OTHERWISE SPECIFIED  
 TOLERANCES ARE IN INCHES  
 2 PL: ± 0.010, 3 PL: ± 0.005  
 INTERPRET DIM AND TOL PER  
 ASME Y14.5M - 1994  
 THIRD ANGLE PROJECTION

DESIGN BY:	RJC
DATE:	00/10/20
DRAWN BY:	RJC
DATE:	00/10/20
AUTH:	
DATE:	
AUTH:	
DATE:	
FILENAME:	106770.DGN

UNLESS OTHERWISE SPECIFIED  
 TOLERANCES ARE IN INCHES  
 2 PL: ± 0.010, 3 PL: ± 0.005  
 INTERPRET DIM AND TOL PER  
 ASME Y14.5M - 1994  
 THIRD ANGLE PROJECTION

DESIGN BY:	RJC
DATE:	00/10/20
DRAWN BY:	RJC
DATE:	00/10/20
AUTH:	
DATE:	
AUTH:	
DATE:	
FILENAME:	106770.DGN

UNLESS OTHERWISE SPECIFIED  
 TOLERANCES ARE IN INCHES  
 2 PL: ± 0.010, 3 PL: ± 0.005  
 INTERPRET DIM AND TOL PER  
 ASME Y14.5M - 1994  
 THIRD ANGLE PROJECTION

DESIGN BY:	RJC
DATE:	00/10/20
DRAWN BY:	RJC
DATE:	00/10/20
AUTH:	
DATE:	
AUTH:	
DATE:	
FILENAME:	106770.DGN

UNLESS OTHERWISE SPECIFIED  
 TOLERANCES ARE IN INCHES  
 2 PL: ± 0.010, 3 PL: ± 0.005  
 INTERPRET DIM AND TOL PER  
 ASME Y14.5M - 1994  
 THIRD ANGLE PROJECTION

DESIGN BY:	RJC
DATE:	00/10/20
DRAWN BY:	RJC
DATE:	00/10/20
AUTH:	
DATE:	
AUTH:	
DATE:	
FILENAME:	106770.DGN

UNLESS OTHERWISE SPECIFIED  
 TOLERANCES ARE IN INCHES  
 2 PL: ± 0.010, 3 PL: ± 0.005  
 INTERPRET DIM AND TOL PER  
 ASME Y14.5M - 1994  
 THIRD ANGLE PROJECTION

DESIGN BY:	RJC
DATE:	00/10/20
DRAWN BY:	RJC
DATE:	00/10/20
AUTH:	
DATE:	
AUTH:	
DATE:	
FILENAME:	106770.DGN

UNLESS OTHERWISE SPECIFIED  
 TOLERANCES ARE IN INCHES  
 2 PL: ± 0.010, 3 PL: ± 0.005  
 INTERPRET DIM AND TOL PER  
 ASME Y14.5M - 1994  
 THIRD ANGLE PROJECTION

DESIGN BY:	RJC
DATE:	00/10/20
DRAWN BY:	RJC
DATE:	00/10/20
AUTH:	
DATE:	
AUTH:	
DATE:	
FILENAME:	106770.DGN

UNLESS OTHERWISE SPECIFIED  
 TOLERANCES ARE IN INCHES  
 2 PL: ± 0.010, 3 PL: ± 0.005  
 INTERPRET DIM AND TOL PER  
 ASME Y14.5M - 1994  
 THIRD ANGLE PROJECTION

DESIGN BY:	RJC
DATE:	00/10/20
DRAWN BY:	RJC
DATE:	00/10/20
AUTH:	
DATE:	
AUTH:	
DATE:	
FILENAME:	106770.DGN

UNLESS OTHERWISE SPECIFIED  
 TOLERANCES ARE IN INCHES  
 2 PL: ± 0.010, 3 PL: ± 0.005  
 INTERPRET DIM AND TOL PER  
 ASME Y14.5M - 1994  
 THIRD ANGLE PROJECTION

DESIGN BY:	RJC
DATE:	00/10/20
DRAWN BY:	RJC
DATE:	00/10/20
AUTH:	
DATE:	
AUTH:	
DATE:	
FILENAME:	106770.DGN

UNLESS OTHERWISE SPECIFIED  
 TOLERANCES ARE IN INCHES  
 2 PL: ± 0.010, 3 PL: ± 0.005  
 INTERPRET DIM AND TOL PER  
 ASME Y14.5M - 1994  
 THIRD ANGLE PROJECTION

DESIGN BY:	RJC
DATE:	00/10/20
DRAWN BY:	RJC
DATE:	00/10/20
AUTH:	
DATE:	
AUTH:	
DATE:	
FILENAME:	106770.DGN

UNLESS OTHERWISE SPECIFIED  
 TOLERANCES ARE IN INCHES  
 2 PL: ± 0.010, 3 PL: ± 0.005  
 INTERPRET DIM AND TOL PER  
 ASME Y14.5M - 1994  
 THIRD ANGLE PROJECTION

DESIGN BY:	RJC
DATE:	00/10/20
DRAWN BY:	RJC
DATE:	00/10/20
AUTH:	
DATE:	
AUTH:	
DATE:	
FILENAME:	106770.DGN

UNLESS OTHERWISE SPECIFIED  
 TOLERANCES ARE IN INCHES  
 2 PL: ± 0.010, 3 PL: ± 0.005  
 INTERPRET DIM AND TOL PER  
 ASME Y14.5M - 1994  
 THIRD ANGLE PROJECTION

DESIGN BY:	RJC
DATE:	00/10/20
DRAWN BY:	RJC
DATE:	00/10/20
AUTH:	
DATE:	
AUTH:	
DATE:	
FILENAME:	106770.DGN

UNLESS OTHERWISE SPECIFIED  
 TOLERANCES ARE IN INCHES  
 2 PL: ± 0.010, 3 PL: ± 0.005  
 INTERPRET DIM AND TOL PER  
 ASME Y14.5M - 1994  
 THIRD ANGLE PROJECTION

DESIGN BY:	RJC
DATE:	00/10/20
DRAWN BY:	RJC
DATE:	00/10/20
AUTH:	
DATE:	
AUTH:	
DATE:	
FILENAME:	106770.DGN

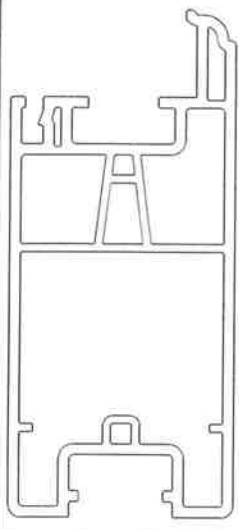
UNLESS OTHERWISE SPECIFIED  
 TOLERANCES ARE IN INCHES  
 2 PL: ± 0.010, 3 PL: ± 0.005  
 INTERPRET DIM AND TOL PER  
 ASME Y14.5M - 1994  
 THIRD ANGLE PROJECTION

DESIGN BY:	RJC
DATE:	00/10/20
DRAWN BY:	RJC
DATE:	00/10/20
AUTH:	
DATE:	
AUTH:	
DATE:	
FILENAME:	106770.DGN

UNLESS OTHERWISE SPECIFIED  
 TOLERANCES ARE IN INCHES  
 2 PL: ± 0.010, 3 PL: ± 0.005  
 INTERPRET DIM AND TOL PER  
 ASME Y14.5M - 1994  
 THIRD ANGLE PROJECTION

REV	DESCRIPTION	DATE	APPROVED
H	ADDED GAUGE	09/25/26	BBB

CAD MAINTAINED, CHANGES SHALL BE INCORPORATED BY THE DESIGN ACTIVITY.

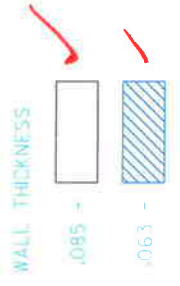


SCALE: 1:1

KEY PRODUCT CHARACTERISTICS	
C	DIMENSION .750 - .810
H	DIMENSION 1.745 - 1.775
I	DIMENSION 3.297 - 3.317
J	DIMENSION .130 - .150
L	DIMENSION .790 - .810

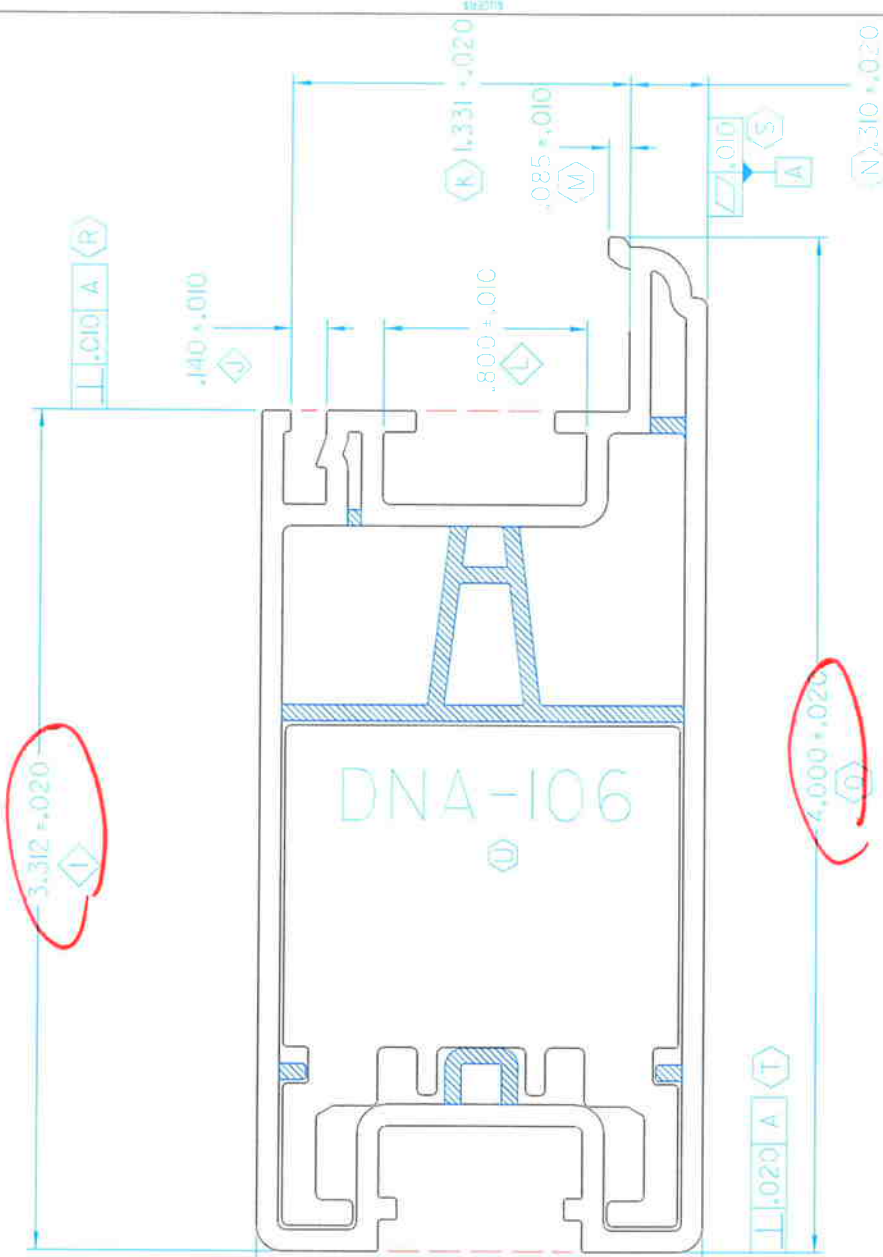


CTLA No. 205416410-1  
 Date Verified: 5/21/10  
 Verified By: [Signature]



NOTES:

1. "STD00003" S STRAIGHTNESS CLASS B AND LENGTH TOLERANCES APPLY (A)
2. INTERPRET ALL TOLERANCE APPLICATIONS PER STD00013 (B)
3. UNSPECIFIED EXTERNAL RADIUS = .XXX ±.010 / -.005 (C)
4. UNSPECIFIED INTERNAL RADIUS = .XXX ±.020 / -.005 (D)
5. UNSPECIFIED EXTERNAL WALL THICKNESS = .XXX ±.10% (E)
6. UNSPECIFIED INTERNAL WALL THICKNESS = .XXX ±.20% (F)



<b>CONFIDENTIAL</b>		UNLESS OTHERWISE SPECIFIED DIM ARE IN INCHES TOL ON ANGLES: 1° P 2° P L; 0.010° 3° P L; 0.005° INTERCEPT DIM AND TOL PER ASME Y14.5M - 1994																	
UNPUBLISHED WORK © 2008 DECEUNINCK NORTH AMERICA		THIRD ANGLE PROJECTION																	
THIS DOCUMENT CONTAINS PROPRIETARY AND CONFIDENTIAL INFORMATION. DO NOT COPY OR DISCLOSE THIS INFORMATION WITHOUT THE EXPRESS WRITTEN CONSENT OF DECEUNINCK NORTH AMERICA. DECEUNINCK NORTH AMERICA RESERVES THE RIGHT TO CHANGE THIS DRAWING AND ANY ASSOCIATED DOCUMENTS.		<table border="1"> <tr> <th>DESIGN BY</th> <th>DATE</th> </tr> <tr> <td>TRAVIS BCS</td> <td>01/26/21</td> </tr> <tr> <th>DATE</th> <th>DATE</th> </tr> <tr> <td>01/26/21</td> <td>01/26/21</td> </tr> <tr> <th>DATE</th> <th>DATE</th> </tr> <tr> <td>01/26/21</td> <td>01/26/21</td> </tr> <tr> <th>FILE NAME</th> <th>FILE NAME</th> </tr> <tr> <td>10000225.M</td> <td>10000225.M</td> </tr> </table>		DESIGN BY	DATE	TRAVIS BCS	01/26/21	DATE	DATE	01/26/21	01/26/21	DATE	DATE	01/26/21	01/26/21	FILE NAME	FILE NAME	10000225.M	10000225.M
DESIGN BY	DATE																		
TRAVIS BCS	01/26/21																		
DATE	DATE																		
01/26/21	01/26/21																		
DATE	DATE																		
01/26/21	01/26/21																		
FILE NAME	FILE NAME																		
10000225.M	10000225.M																		
<table border="1"> <tr> <th>SCALE</th> <th>FILE NO.</th> <th>PROJECT</th> <th>REV</th> </tr> <tr> <td>SCALE 1:1</td> <td>10000225.M</td> <td>10000225.M</td> <td>1</td> </tr> </table>		SCALE	FILE NO.	PROJECT	REV	SCALE 1:1	10000225.M	10000225.M	1	<table border="1"> <tr> <td colspan="2"><b>deceuninck</b></td> <td colspan="2">311 NORTH ZAVEN ROAD WOOD, OH 44099</td> </tr> <tr> <td colspan="2">NORTH AMERICA</td> <td colspan="2">MAIN SASH - PD</td> </tr> </table>		<b>deceuninck</b>		311 NORTH ZAVEN ROAD WOOD, OH 44099		NORTH AMERICA		MAIN SASH - PD	
SCALE	FILE NO.	PROJECT	REV																
SCALE 1:1	10000225.M	10000225.M	1																
<b>deceuninck</b>		311 NORTH ZAVEN ROAD WOOD, OH 44099																	
NORTH AMERICA		MAIN SASH - PD																	

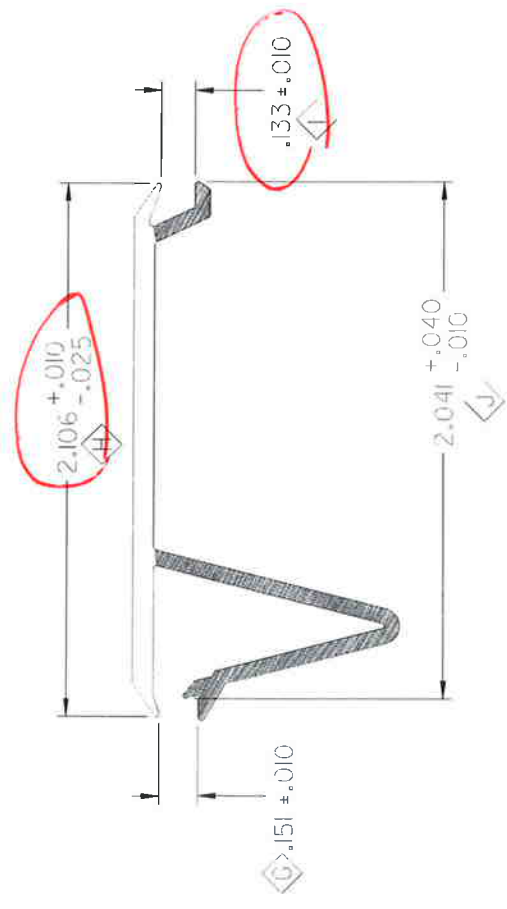
REV	DESCRIPTION	DATE	APPROVED
D	KPC	10/08/25	BWB

REVISION HISTORY

CAD MAINTAIN?, CHANGES SHALL BE INCORPORATED BY THE DESIGN ACTIVITY.

KEY PRODUCT CHARACTERISTICS

- G DIMENSION .141 - .161
- H DIMENSION 2.081 - 2.116
- I DIMENSION .123 - .143
- J DIMENSION 2.031 - 2.081



**CTL** CERTIFIED TESTING LABORATORIES  
 ARCHITECTURAL DIVISION  
 7252 NARCOOSSEE ROAD  
 ORLANDO, FLORIDA 32822

CTLA No. **2024w-cw-1**  
 Date Verified: **5/21/25**  
 Verified By: **[Signature]**

DESIGN BY:	CTC
DATE:	05/14/24
DRAWN BY:	CTC
DATE:	05/14/24
ADTH:	DATE:
ADTH:	DATE:
FRNAME:	102726

UNLESS OTHERWISE SPECIFIED  
 DIM ARE IN INCHES  
 TOL ON ANGLES ± 1°  
 P1 ± 0.000" 3 P. ± 0.005"  
 INTERPRET DIM AND TOL PER  
 ASME Y14.5M - 1994

THIRD ANGLE PROJECTION

**CONFIDENTIAL**  
 UNPUBLISHED WORK © 2010  
 DECEUNINCK NORTH AMERICA

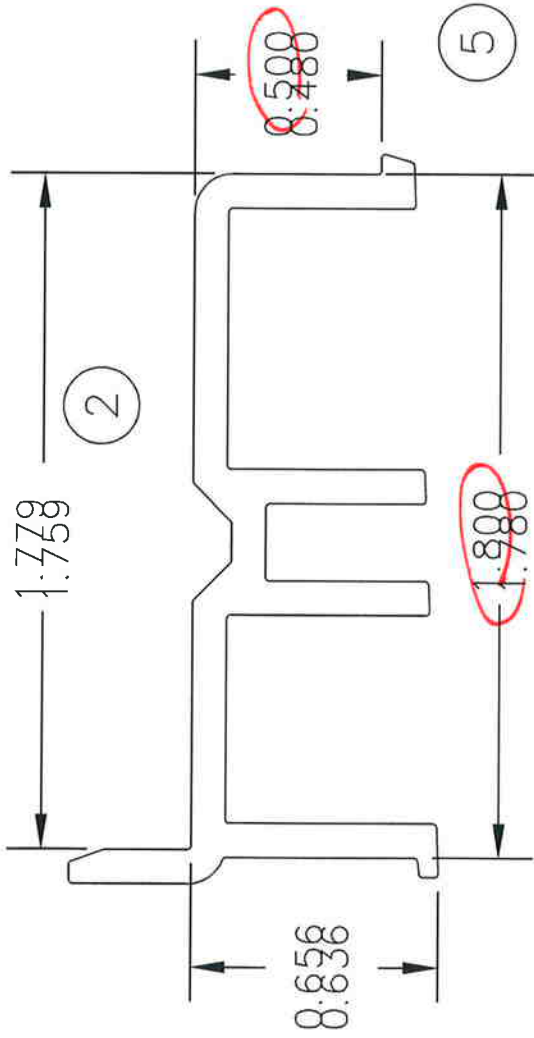
THIS DOCUMENT CONTAINS PROPRIETARY AND CONFIDENTIAL INFORMATION. DO NOT COPY OR DISCLOSE THIS INFORMATION WITHOUT THE EXPRESS WRITTEN CONSENT OF DECEUNINCK NORTH AMERICA. DECEUNINCK NORTH AMERICA RESERVES THE RIGHT TO CHANGE THIS DRAWING AND ANY ASSOCIATED DOCUMENTS.

REV	DESCRIPTION	DATE	APPROVED
B	FRAME ADAPTOR	10/08/25	BWB

SCALE 1:1

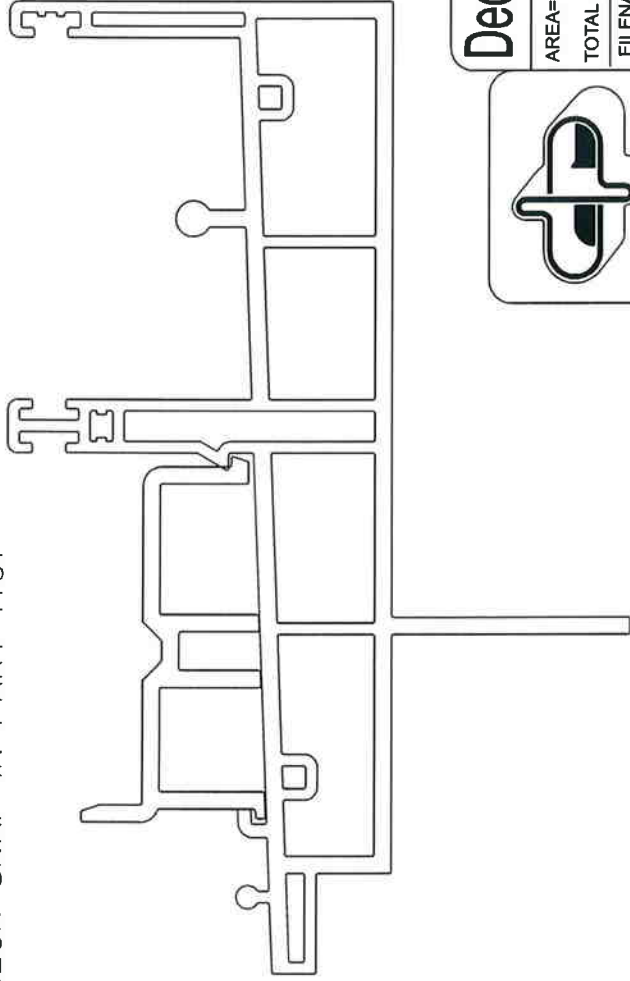
NOTES:  
 1. DIMENSIONS STRAIGHTNESS CLASS E AVE LENGTH TOLERANCES APP 1 (G)  
 2. INTERPRET ALL TOLERANCE APPLICATIONS PER STD 001 (B)  
 3. UNLESS OTHERWISE SPECIFIED, ALL DIMENSIONS ARE IN INCHES  
 4. UNLESS OTHERWISE SPECIFIED, ALL DIMENSIONS ARE IN INCHES  
 5. UNLESS OTHERWISE SPECIFIED, ALL DIMENSIONS ARE IN INCHES  
 6. UNLESS OTHERWISE SPECIFIED, ALL DIMENSIONS ARE IN INCHES





1 WALL THICKNESS 0.100  
0.080

6 CHECK SNAP IN PART 1101



**CTL**  
CERTIFIED TESTING LABORATORIES  
ARCHITECTURAL DIVISION  
7252 NARCOOSSEE ROAD  
ORLANDO, FLORIDA 32822  
CTLA No. 20540-4-1  
Date Verified: 5/21/10  
Verified By: [Signature]

Deceuninck®



NORTH AMERICA/Oakland N.J.		TOL: ±0.010
AREA=	TOTAL WEIGHT=	
FILENAME: path		
BY CTC	DATE 11/14/05	MATL PVC
SILL INSERT		SCALE 2:1

REV	BY	APP'VD	DATE	CHANGE	10001105_SH
-----	----	--------	------	--------	-------------

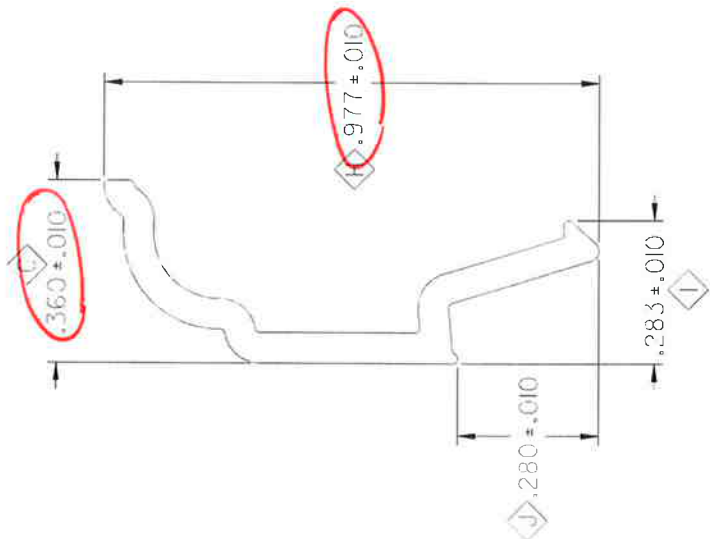
CAD MAINTAINED, CHANGES SHALL BE INCORPORATED BY THE DESIGN ACTIVITY.

REVISION HISTORY

REV	DESCRIPTION	DATE	APPROVED
E	CHANGED MYLAR	10/11/09	BHB

KEY PRODUCT CHARACTERISTICS

G	GAUGE DNA-209
H	GAUGE DNA-209
I	GAUGE DNA-209
J	GAUGE DNA-209



**CTL**  
 CERTIFIED TESTING LABORATORIES  
 ARCHITECTURAL DIVISION  
 7252 NARCOOSSEE ROAD  
 ORLANDO, FLORIDA 32822

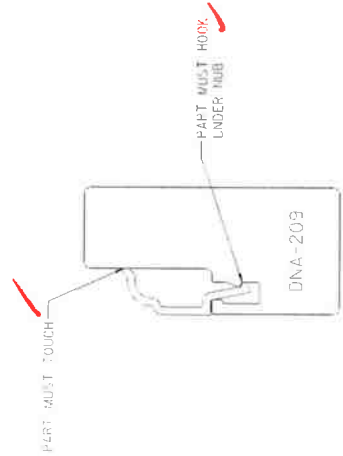
CTLA No. 20943 a w-1  
 Date Verified: 3/21/10  
 Verified By: [Signature]

USE MYLAR 1000III.OP REV D

DESIGN BY:	MG	DATE:
UNLESS OTHERWISE SPECIFIED DIM ARE IN INCHES	00/12/01	
TOL ON ANGLES ± 1°		
FIN: ± 0.007 3 P ± 0.005*		
INTERPRET DIM AND TOL PER ASME Y14.5M - 1994		
THIRD ANGLE PROJECTION		
THIS DOCUMENT CONTAINS PROPRIETARY AND CONFIDENTIAL INFORMATION. DO NOT COPY OR DISCLOSE THIS INFORMATION WITHOUT THE EXPRESS WRITTEN CONSENT OF DECEUNINCK NORTH AMERICA. DECEUNINCK NORTH AMERICA, NORTH AMERICA, DECEUNINCK NORTH AMERICA, DRAWING AND ANY ASSOCIATED DOCUMENTS.		
<b>CONFIDENTIAL</b> UNPUBLISHED WORK © 2010 DECEUNINCK NORTH AMERICA		
NAME:	GLAZING BEAD	
SPEC. DWG. NO:	1000III.SH	
SCALE:	4:1	1/8"=1"
FILE NAME:	1005341	
REV:	E	



SCALE 1:1



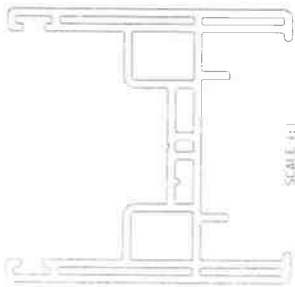
SLIDE PART INTO GAUGE FROM THE ENC. PART WILL NOT SNAP INTO GAUGE



WALL THICKNESS

- NOTES:
- A. UNLESS OTHERWISE SPECIFIED CLASS A AND LENGTH TOLERANCES APPLY
  - B. INTERPRET ALL TOLERANCE APPLICATIONS PER STD 0013
  - C. UNLESS SPECIFIED EXTERNAL RADIUS = .XXX ± .01 / ± .005
  - D. UNLESS SPECIFIED INTERNAL RADIUS = .XXX ± .020 / ± .005
  - E. UNLESS SPECIFIED EXTERNAL WALL THICKNESS = .XXX ± .10 / ± .02
  - F. UNLESS SPECIFIED INTERNAL WALL THICKNESS = .XXX ± .10 / ± .02

CAD MAINTAINED. CHANGES SHALL BE INCORPORATED BY THE DESIGN ACTIVITY.

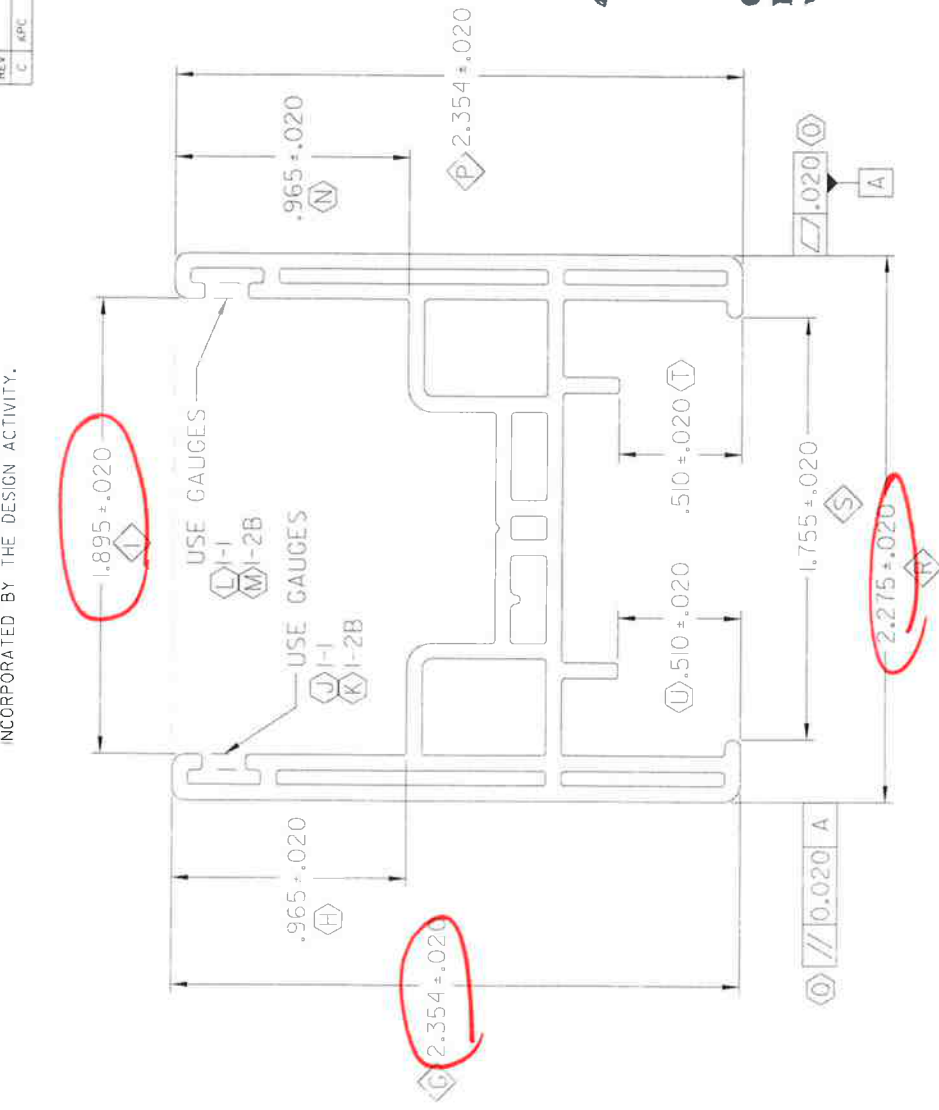


SCALE 1:1

REV	DESCRIPTION	DATE	APPROVED
C	APC	07/09/27	EWB

KEY PRODUCT CHARACTERISTICS	
G	DIMENSION 2.354 - 2.374
I	DIMENSION 1.875 - 1.915
P	DIMENSION 2.334 - 2.374
R	DIMENSION 2.255 - 2.295
S	DIMENSION 1.735 - 1.775



WALL THICKNESS

.065

**CTI**  
 CERTIFIED TESTING LABORATORIES  
 ARCHITECTURAL DIVISION  
 7252 NARCOOSSEE ROAD  
 ORLANDO, FLORIDA 32822

CTLA No. **205410 x 10-1**  
 Date Verified: **5/24/10**  
 Verified By: **[Signature]**

**deceuninck**  
 NORTH AMERICA

NAME: **SASH ADAPTOR**  
 AS-10000001-01

DESIGN BY: CJC  
 DATE: 05/27/04  
 DRAWN BY: CJC  
 DATE: 05/27/04  
 AUTH: [Signature]  
 DATE: [Signature]  
 AUTH: [Signature]  
 DATE: [Signature]  
 FILENAME: 102777

UNLESS OTHERWISE SPECIFIED  
 DIMENSIONS ARE IN INCHES  
 TOL ON ANGLES:  
 2 PL: ± 0.005" 3 PL: ± 0.005"  
 INTERPRET DIM AND TOL PER  
 ASME Y14.5M - 1994

THIRD ANGLE PROJECTION

**CONFIDENTIAL**  
 UNPUBLISHED WORK © 2010  
 DECEUNINCK NORTH AMERICA  
 THIS DOCUMENT CONTAINS PROPRIETARY AND  
 CONFIDENTIAL INFORMATION. DO NOT COPY  
 OR DISCLOSE THIS INFORMATION WITHOUT THE  
 EXPRESS WRITTEN CONSENT OF DECEUNINCK  
 NORTH AMERICA. DECEUNINCK NORTH AMERICA  
 RESERVES THE RIGHT TO CHANGE THIS  
 DRAWING AND ANY ASSOCIATED DOCUMENTS.

NOTES:  
 1. STD00013: STRAIGHTNESS CLASS C AND LENGTH TOLERANCES APPLY (A)  
 2. INTERPRET ALL TOLERANCE APPLICATIONS PER STD00013 (B)  
 3. UNSPECIFIED EXTERNAL RADI = .XXX ±.010 / -.005 (C)  
 4. UNSPECIFIED INTERNAL RADI = .XXX ±.020 / -.005 (D)  
 5. UNSPECIFIED EXTERNAL WALL THICKNESS = .XXX +/- 10% (E)  
 6. UNSPECIFIED INTERNAL WALL THICKNESS = .XXX +/- 20% (F)

CAD MAINTAINERS CHANGES SHALL BE INCORPORATED BY THE DESIGN ACTIVITY.

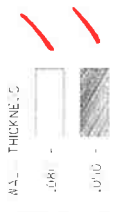
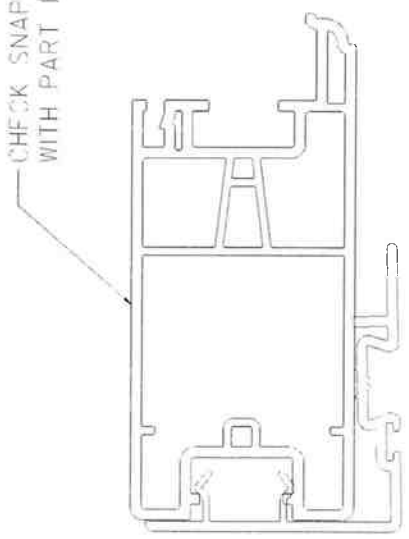
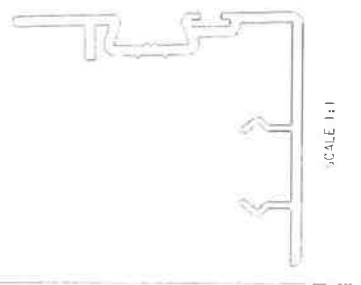
**CTI** CERTIFIED TESTING SERVICES  
**ARCHITECTURAL DIVISION**  
 7252 NARCOOSSEE ROAD  
 ORLANDO, FLORIDA 32822

CTLA No. 2054 w. w. H  
 Date Verified: 5/21/10  
 Verified By: [Signature]

CHECK SNAP CONDITION WITH PART 10001102 **P**

REVISION HISTORY		DATE	APPROVED
REV	DESCRIPTION	10/28/27	BRB
E	PPC		

KEY PRODUCT CHARACTERISTICS	
H	DIMENSION .754 - .804
K	DIMENSION .471 - .491
J	DIMENSION .285 - .315
M	DIMENSION .450 - .480
P	SNAP CONDITION



**deceuninck** NORTH AMERICA  
 28 NORTH GAVEN ROAD  
 WOODBRIDGE, ONTARIO L4L 9V9

DESIGN BY: [Blank]  
 DATE: 06/10/22  
 DRAWN BY: JGM  
 DATE: 07/01/02  
 AUTH: [Blank]  
 DATE: [Blank]  
 AUTH: [Blank]  
 DATE: [Blank]  
 FILE NAME: 10001102\_290

UNLESS OTHERWISE SPECIFIED DIM ARE IN INCHES  
 TOL ON ANGLES: P  
 P1: ± 0.007 3 P: ± 0.005  
 INTERPRET DIM AND TOL PER ASME Y14.5M - 1994

THIRD ANGLE PROJECTION

THIS DOCUMENT CONTAINS PROPRIETARY AND CONFIDENTIAL INFORMATION. DO NOT COPY OR DISCLOSE THIS INFORMATION WITHOUT THE EXPRESS WRITTEN CONSENT OF DECEUNINCK NORTH AMERICA. DECEUNINCK NORTH AMERICA PRESERVES THE RIGHT TO CHANGE THIS DRAWING AND ANY ASSOCIATED DOCUMENTS.

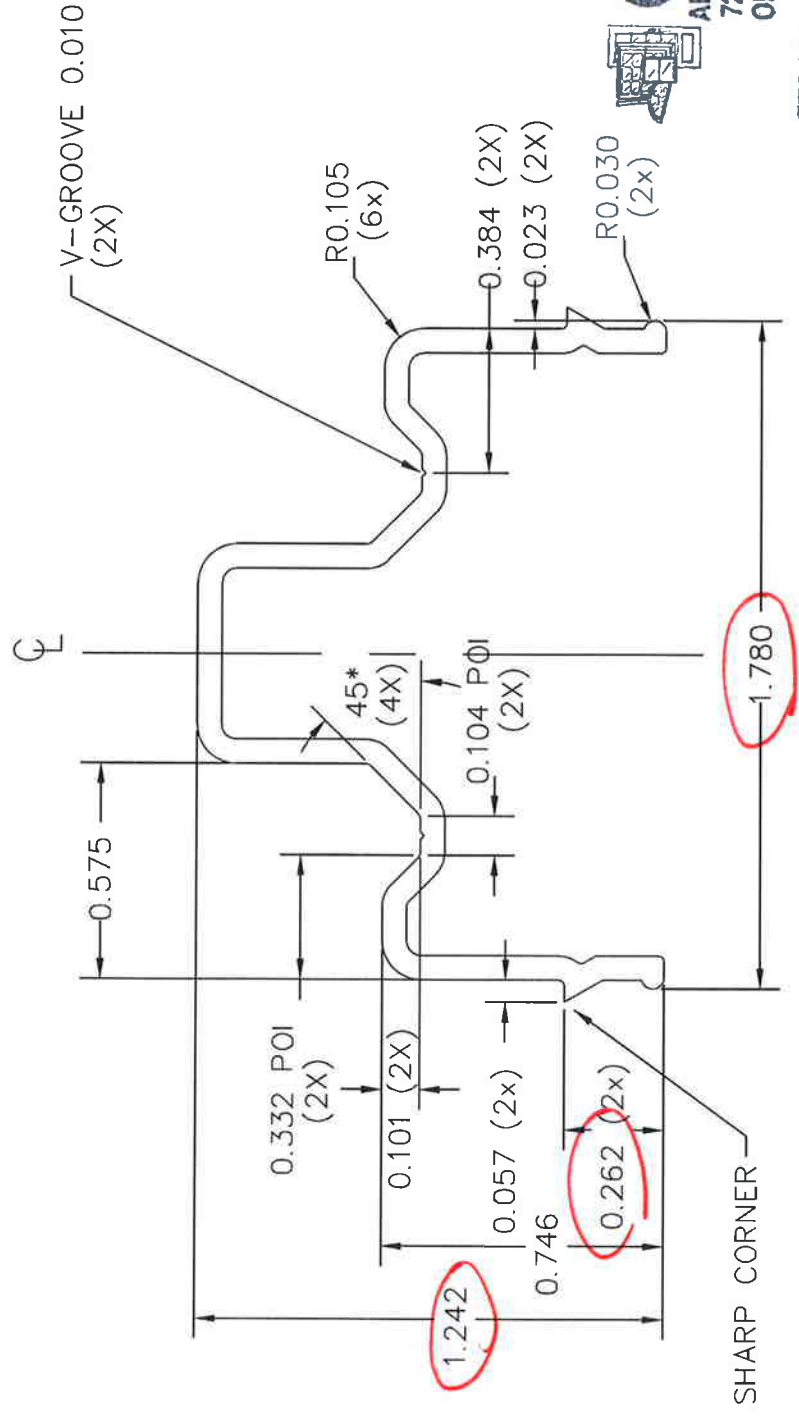
**CONFIDENTIAL**  
 UNPUBLISHED WORK © 2010 DECEUNINCK NORTH AMERICA

NAME: SASH ADAPTER  
 SIZE: 1/2" x 1/2" x 1/2" x 1/2" x 1/2" x 1/2"  
 REV: B  
 FILE NAME: 10001102\_290

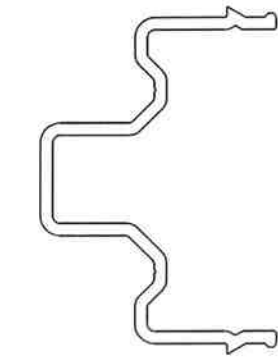
- NOTE: S
- 1. TOLERANCE STRAIGHTNESS, ASS. A AND LENGTH TOLERANCES APPLY
  - 2. INTERSECTIONS ARE APPLICABLE PER ISO 1101
  - 3. UNLESS SPECIFIED INTERNAL RADIUS = R.005
  - 4. UNLESS SPECIFIED INTERNAL WALL THICKNESS = .005 / .005
  - 5. UNLESS SPECIFIED EXTERNAL WALL THICKNESS = .005 / .005
  - 6. UNLESS SPECIFIED INTERNAL WALL THICKNESS = .005 / .005

THIS MATERIAL IS PROPRIETARY & CONFIDENTIAL TO VINYL BUILDING PRODUCTS INC. & SHALL NOT BE REPRODUCED, COPIED OR DISSEMINATED WITHOUT THE EXPRESSED WRITTEN PERMISSION OF VINYL BUILDING PRODUCTS INCORPORATED

A 011H063



ACTUAL SIZE  
NO EXPOSED SURFACES



**CTI**  
CERTIFIED TESTING LABORATORIES  
ARCHITECTURAL DIVISION  
7252 NARCOSSE ROAD  
ORLANDO, FLORIDA 32822

CTLA No. 20544/W-1  
Date Verified: 8/21/10  
Verified By: [Signature]

NOTES:  
1. ALL UNSPECIFIED RADII 0.015.  
2. ALCOA P/N 23111 (WHITE P-001, DESERT SAND P-029).



**VINYL BUILDING PRODUCTS INC.**

TOLERANCES (EXCEPT AS NOTED)  
±0.010

DRAWN	MG	DATE	10/28/3	APPV'D
MATERIAL				SCALE
6061-T6, 6105-15				2/1

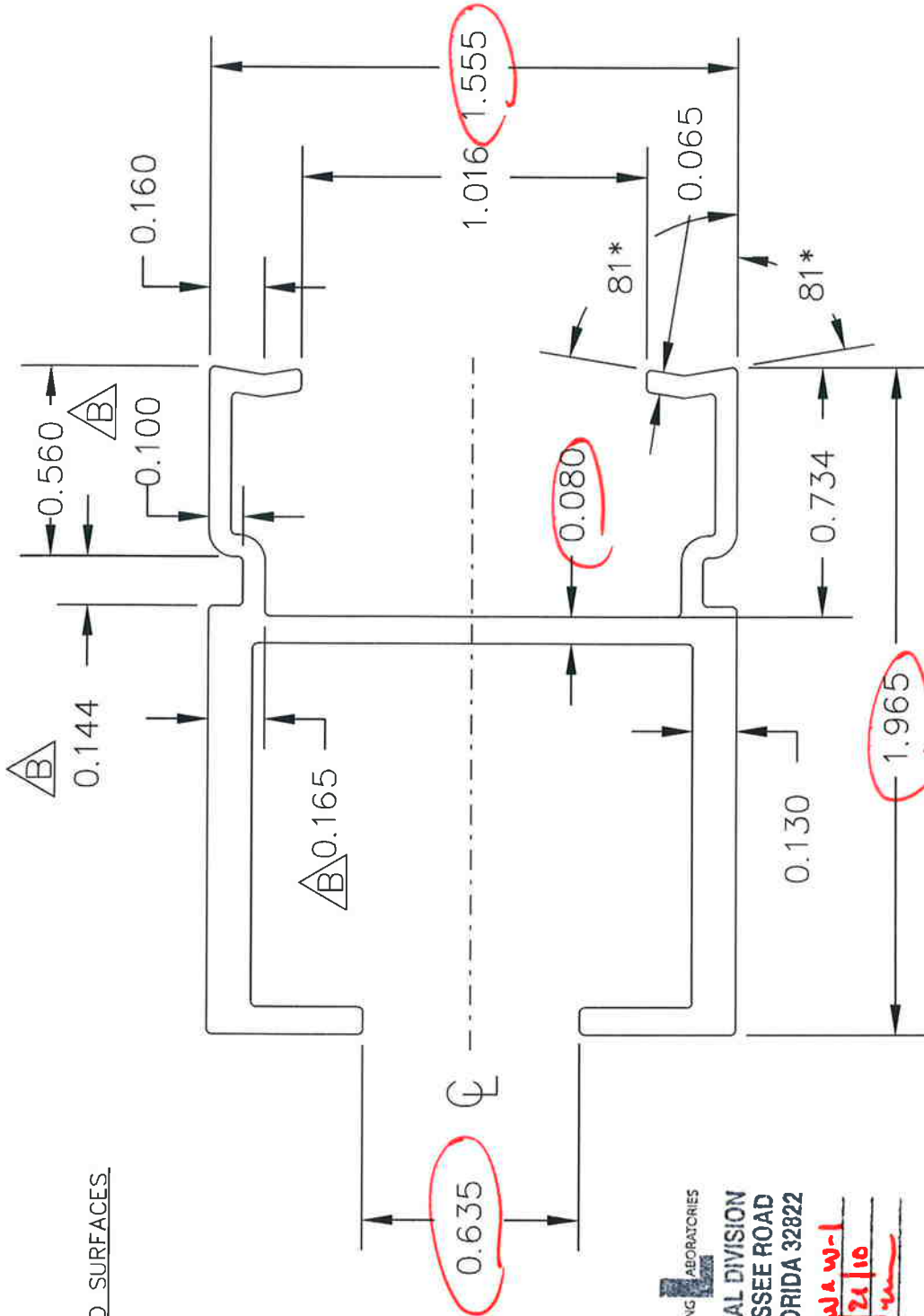
SNUBBER

10300148

REV	BY	APPV'D	DATE	CHANGE

THIS MATERIAL IS PROPRIETARY & CONFIDENTIAL TO VINYL BUILDING PRODUCTS INC. & SHALL NOT BE REPRODUCED, COPIED OR DISSEMINATED WITHOUT THE EXPRESSED WRITTEN PERMISSION OF VINYL BUILDING PRODUCTS INCORPORATED.

A 011H035B



DNA# 10300150

<b>Vinylite®</b>		<b>VINYL BUILDING PRODUCTS INC.</b>	
AREA = .612 sq in.	TOLERANCE	±0.010	
TOTAL WEIGHT = .7175 lb/ft.	DATE	10/28/04	APPVD
DRAWN	CTC	MAT'L	Al 6105 T-6
Sash Reinforcement		SCALE	2:1
		10300150	

**CTI** CERTIFIED TESTING LABORATORIES  
 ARCHITECTURAL DIVISION  
 7252 NARCOOSSEE ROAD  
 ORLANDO, FLORIDA 32822

CTLA No. 2054w1 w-1  
 Date Verified: 5/24/10  
 Verified By: [Signature]

- NOTES:
- ALL UNSPECIFIED RADII ARE 0.015.
  - MAKE FROM EITHER 6061-T6 or 6105-T6 ALUMINUM. ✓
  - ALCOA PART NUMBER 23441.

B	CC	10/28/04	Renamed drawing 011H035B Dimension change
A	AL	6/4/04	CHANGED MATERIAL SPECS TO MAKE FROM EITHER 6061-T6 or 6105-T6 ALUMINUM
REV	BY	APPVD	DATE
			CHANGE

THIS MATERIAL IS PROPRIETARY & CONFIDENTIAL TO VINYL BUILDING PRODUCTS INC. AND SHALL NOT BE REPRODUCED, COPIED, OR DISSEMINATED WITHOUT THE EXPRESSED WRITTEN PERMISSION OF VINYL BUILDING PRODUCTS INCORPORATED.

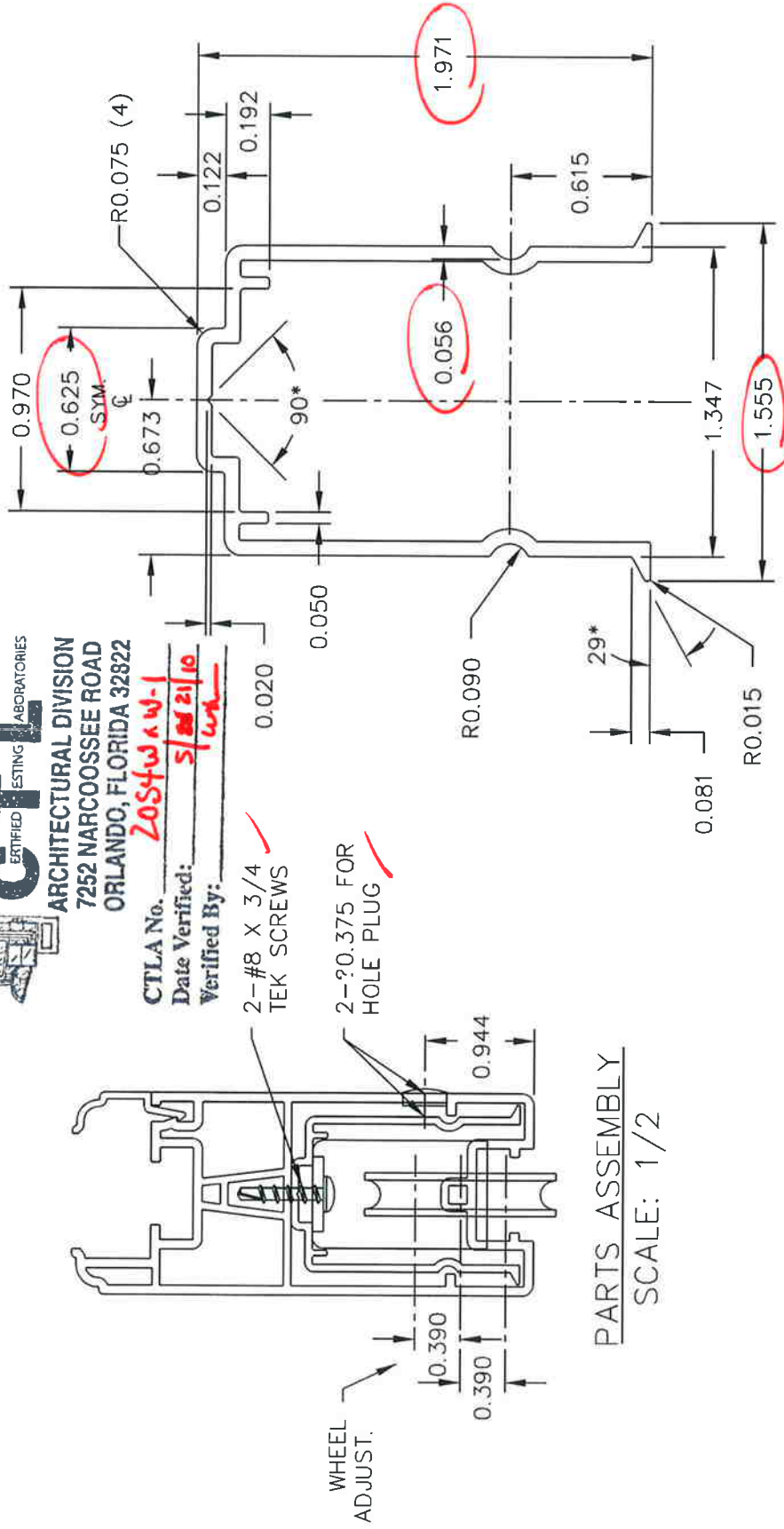
011H074



CTLA No. 2054w a w-1  
 Date Verified: 5/28/10  
 Verified By: lwk

2-#8 X 3/4  
 TEK SCREWS ✓

2-∅0.375 FOR  
 HOLE PLUG ✓



PARTS ASSEMBLY  
 SCALE: 1/2

NOTES:

1. MATERIAL: ALUM. 6005-T5, 6061-T6 or 6105-T5.
2. UNSPECIFIED WALL THICKNESS = .065".
3. BREAK ALL CORNERS R0.015.
4. NO EXPOSED SURFACES.
5. MOMENTS OF INERTIA: I<sub>xx</sub>=.147; I<sub>yy</sub>=.118.

DEPLIS# 10300152



VINYL BUILDING PRODUCTS LLC

AREA = .359 sq. in.  
 WT/FT = .431 lb.  
 PERIM. = 11.200 in.  
 FACTOR = 26

TOLERANCES (EXCEPT AS NOTED)  
 AA STANDARDS

DRAWN RJK DATE 11-30-05 APPV'D

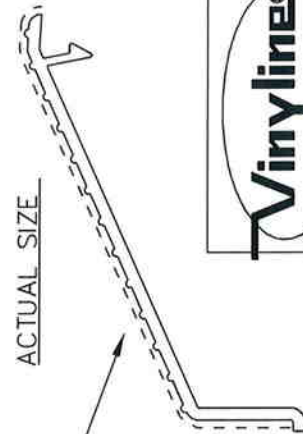
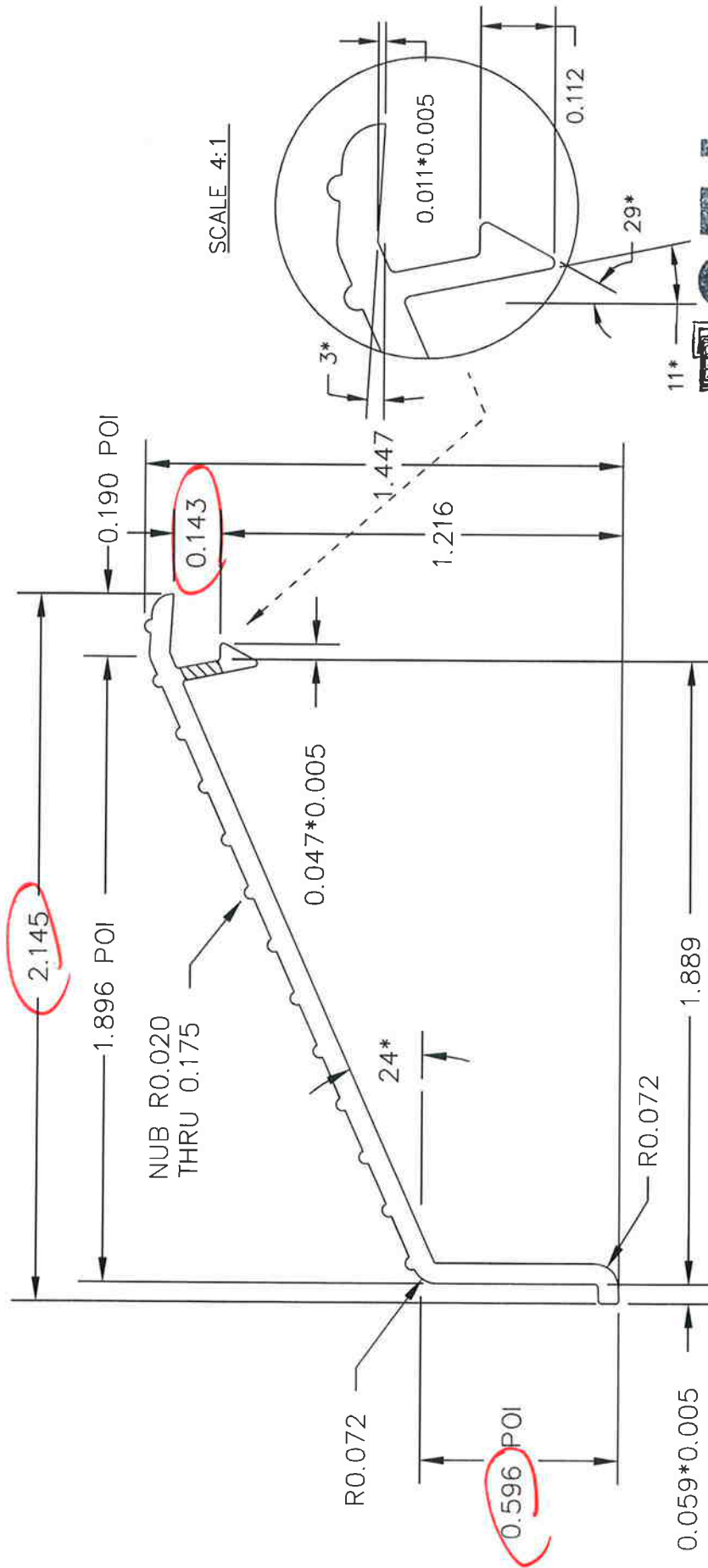
MAT'L NOTE 1 SCALE FULL

RAIL INSERT-SIDE ADJUST ROLLER 10300152

REV	BY	DATE	DESCRIPTION
-	-	-	-

THIS MATERIAL IS PROPRIETARY & CONFIDENTIAL TO VINYL BUILDING PRODUCTS INC. AND SHALL NOT BE REPRODUCED, COPIED OR DISSEMINATED WITHOUT THE EXPRESSED WRITTEN PERMISSION OF VINYL BUILDING PRODUCTS INCORPORATED.

A 011H006



ACTUAL SIZE

EXPOSED SURFACE

NOTES:

1. ALL UNSPECIFIED RADII ARE 0.010.
2. WALL THICKNESS.

0.062 0.040

3. PAINT WITH ALCOA, PPG COLOR UC73603, POLYCRON WHITE.



CTLA No. 205494W-1  
 Date Verified: 5/21/10  
 Verified By:


		TOLERANCES (EXCEPT AS NOTED) ? .010 [0.25]	
AREA = 0.195 WEIGHT = 0.229 lb/ft	DATE 12/26/00	APPVD	SCALE 2/1
DRAWN MG	DATE 12/26/00	APPVD	SCALE 2/1
SILL COVER. SLIDER		MAT'L 6061-T6 6105-T5	
A 10300171		A 10300171	

A MB	2/13/03	ADDED NOTE 3.
REV BY	APPVD	DATE
CHANGE		



# 623.000 PD - 004 - BILL OF MATERIALS 3 & 4 LITE

ITEM NO.	DESCRIPTION	QUANTITY	PART NO.	FAB DWG. NO	SOURCE
1	HEAD	1	10001100	10001100-F-01	A
2	JAMB	2	10001100	10001100-F-05	A
3	EXTERIOR FRAME COVER	2	10001104	10001104-F-01	A
4	INTERIOR FRAME COVER	4	10001104	STRAIGHT CUT	A
5	SILL	1	10001101	10001101-F-01	A
6	SILL THRESHOLD	1	10300171	10300171-F-01	PPPP
7	SILL RISER	2	10001105	10001105-F-01	A
8	WEATHER-STRIPPING - .270 x .250	AS REQ'D	W21255MW		HHHH
9					
10	MISC	6	10300148	10300148-F-01	PPPP
11	ROLLER TRACK CAP	1	1A16719	STRAIGHT CUT	N
12	L - BRACKET	4	011H027		LLLL
13	SILL FRAME GASKET	2	G-A302-Z1-G600		CC
14	FRAME REINFORCEMENT	4	10300149	STRAIGHT CUT	PPPP
15	KEEPER	1			F
16	2778 KEEPER - YZD MILD STEEL				
17	2778 KEEPER - STAINLESS STEEL				
18	T - BRACKET	1 OR 2	DECU-2808-00		DDDD
19	SCREEN KEEPER	1	DECU-2808-84		MMMM
20	BUMPER STOP	2 OR 4	10300213		F
21			011H040		
22			2152.525		
23	SCREWS	36	#8 x 1.25" PFH - 410SS		
24	L - BRACKET - SASH	8	#8 x 1" PFH - 410SS		
25	L - BRACKET - HEAD	8	#8 x 0.75" PFH - 410SS		
26	L - BRACKET - HEAD	8	#8 x 2.5" PFH - 410SS		
27	SILL RISER	4	#8 x 1.25" PFH - 410SS		
28	FRAME ASSEMBLY	12	#8 x 2.5" PPH - 410SS		
29	SCREEN KEEPER	2	#6 x .375" PPH		
30	T - BRACKET	8 OR 16	#8 x 2.5" PFH - 410SS		
31					



**CTLA**  
ESTABLISHED TESTING LABORATORIES

**ARCHITECTURAL DIVISION**  
7252 NARCOOSSEE ROAD  
ORLANDO, FLORIDA 32822

CTLA No. 2054w 4w-1  
Date Verified: 5/21/10  
Verified By: [Signature]

<b>deceuninck</b> NORTH AMERICA	
MONROE, OH	COPYRIGHT 2010
NAME:	623.000 PD - 004
DWN BY:	JGM
CHKD BY:	
DWG NO:	623000PD-004

CONFIDENTIAL  
UNPUBLISHED WORK © 2010  
DECEUNINCK NORTH AMERICA

REV	DATE	DESCRIPTION	BY

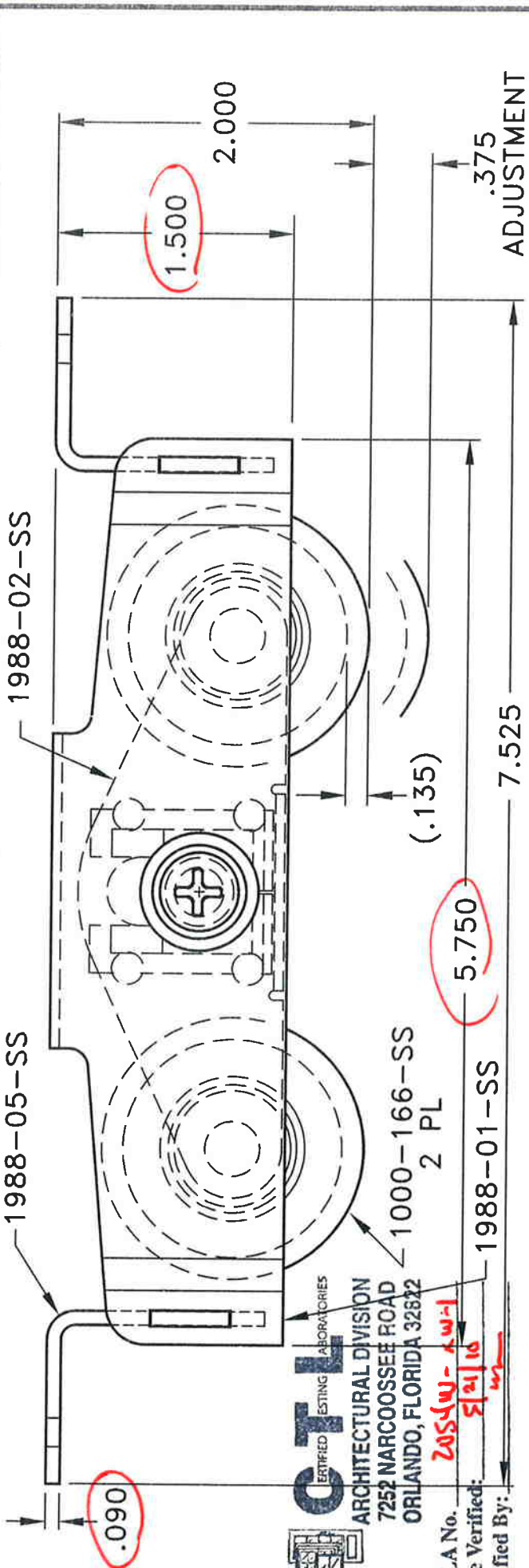
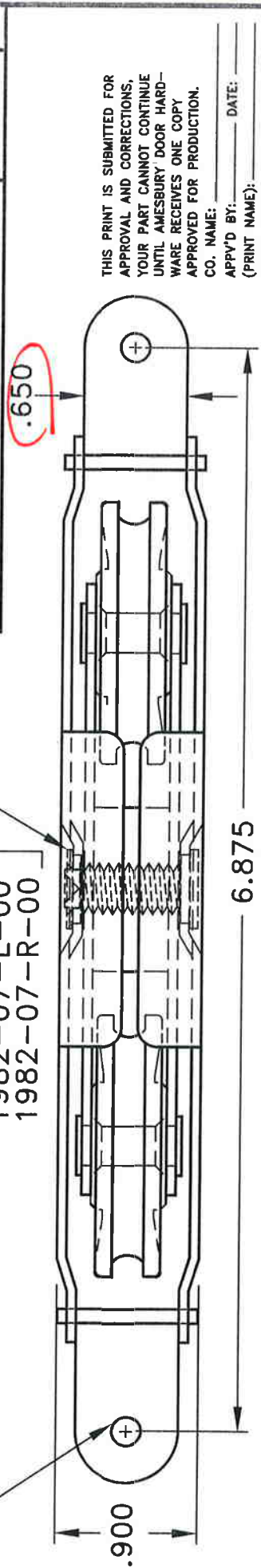
THIS DOCUMENT CONTAINS PROPRIETARY AND CONFIDENTIAL INFORMATION. DO NOT COPY OR DISCLOSE THIS INFORMATION WITHOUT THE EXPRESS WRITTEN CONSENT OF DECEUNINCK NORTH AMERICA. DECEUNINCK NORTH AMERICA RESERVES THE RIGHT TO CHANGE THIS DRAWING AND ANY ASSOCIATED DOCUMENTS.



REV	DESCRIPTION	DATE	BY
A	INTERNAL SLIDES ARE STAINLESS STEEL	NOV-13-06	
B	REVISED TAB SLOT LOCATION	APR-11-07	

1982-04-SS  
 1982-05-SS  
 1982-06-SS  
 1982-07-L-00  
 1982-07-R-00

.181 DIA THRU  
 2 PL



**CTI** CERTIFIED TESTING LABORATORIES  
 ARCHITECTURAL DIVISION  
 7252 NARCOOSSEE ROAD  
 ORLANDO, FLORIDA 32832

CTLA No. 20544-4 w-1  
 Date Verified: 8/24/16  
 Verified By: [Signature]

<b>DOOR HARDWARE</b> <b>AMESBURY GROUP</b>	
TITLE	TA-88-BSS-166 W/ REVERSED MTG TAB
SCALE	1/1
DWG. NO.	1988-8000-REV-SS

THIS DRAWING & SPECIFICATIONS ARE THE PROPERTY OF AMESBURY DOOR HARDWARE AND SHALL NOT BE REPRODUCED WITHOUT WRITTEN PERMISSION. FILE NAME: 1988-8000-REV-SS	UNLESS OTHERWISE SPECIFIED DECIMAL TOL. .XX ± .010 .XXX ± .005 ANGLE ± 1/2° DRAWN JMS NOV-28-05 CHKD
---	---

**NOTES:**

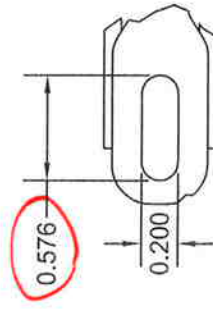
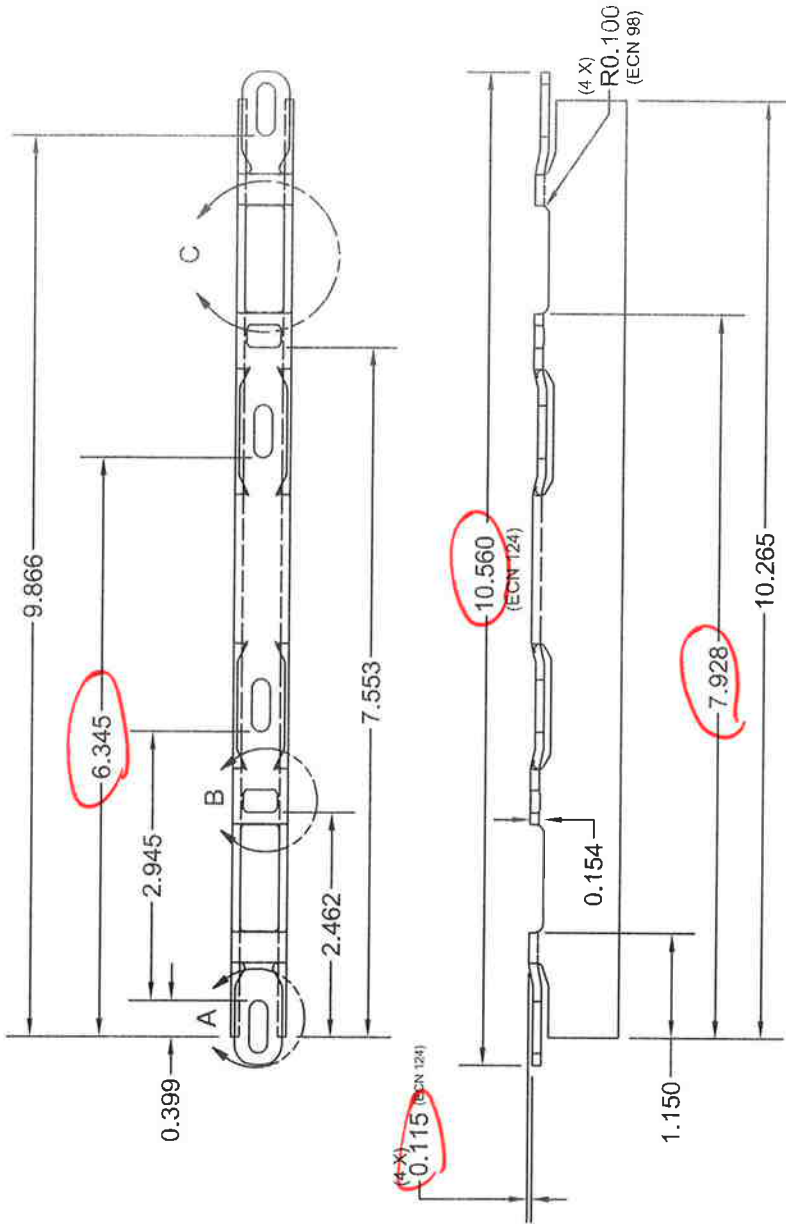
- INNER AND OUTER HSG'S ARE STAINLESS STEEL. ROLLERS AND SCREW ARE STAINLESS STEEL. INTERNAL SLIDES ARE STAINLESS STEEL AND CELCON.

Notes:

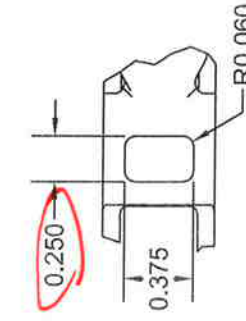
1. Critical dimensions are marked with #, the number is used for reference.
2. All unspecified radii are 0.010 inches
3. All dimensions are in inches
4. Material = 304 Stainless Steel



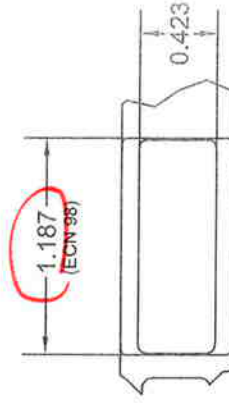
CTLA No. 20540 A W-1  
 Date Verified: 5/10/10  
 Verified By: [Signature]



4X DETAIL A  
SCALE 1:1



2X DETAIL B  
SCALE 1:1



2X DETAIL C  
SCALE 1:1

The information contained in this drawing is the property of Amesbury Group, Inc. - BSI Hardware and is confidential and proprietary to the company. This drawing is not to be copied or reproduced in whole or in part without the express written permission of the company. The information contained in this drawing is to be used solely for the benefit of Amesbury Group, Inc. - BSI Hardware and is not to be disclosed or used in the performance of services or manufacture of goods for any other party without the express written permission of Amesbury Group, Inc. - BSI Hardware.

Date	Revision	#	ECN #	By
3/10/06	INITIAL ISSUE	A	90	TAE
3/22/06	Changed hook slot length from 1.170 to 1.187" Added hook slot radius dimension	B	98	TAE
5/8/06	Adjusted screw flat depth from 0.037 to 0.015 and adjusted overall length from 10.875 to 10.560	C	124	TAE

Date: 1/30/2006  
 Drawn: leggebraaten  
 Scale: 1:2  
 Tolerance  
 Decimal: ± .015  
 Angular: ± 1°  
 Part #: 2778

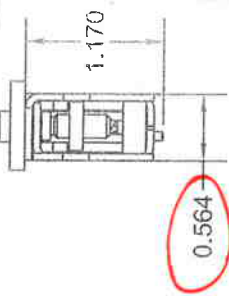
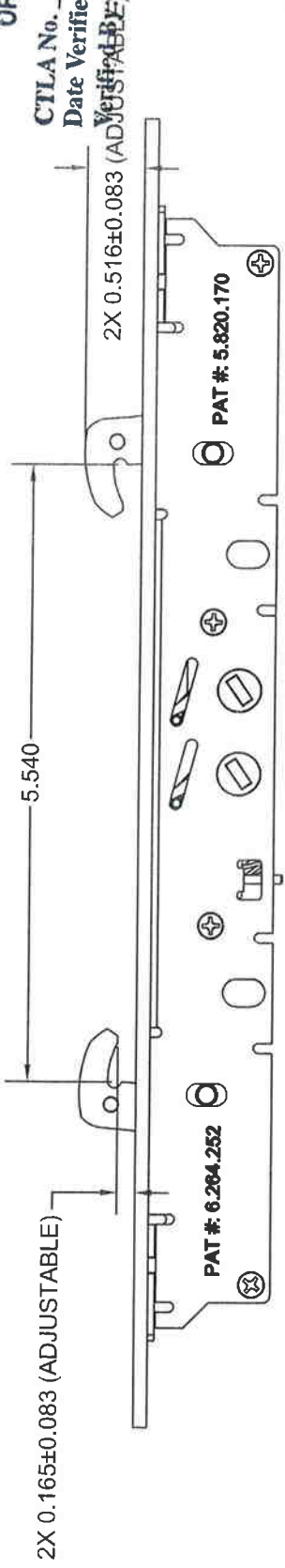
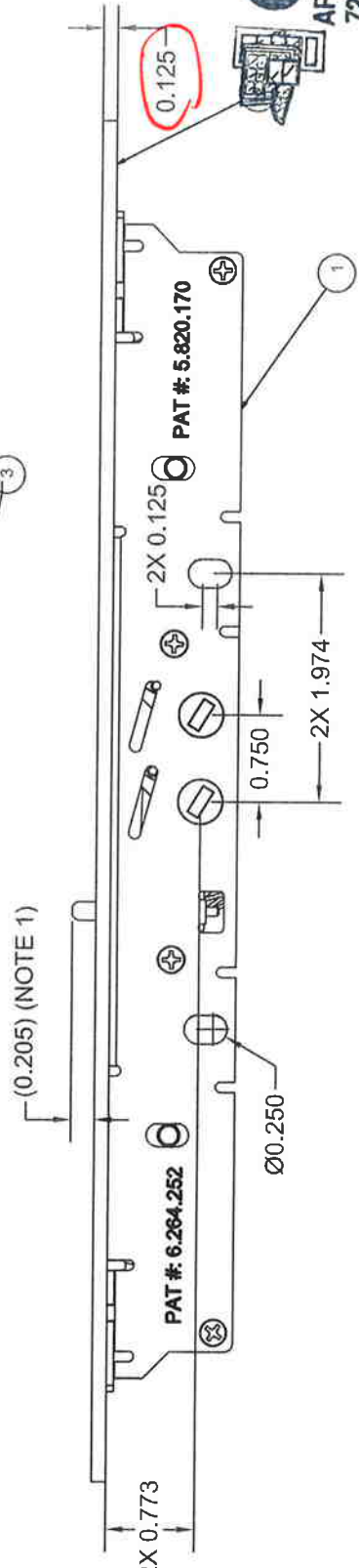
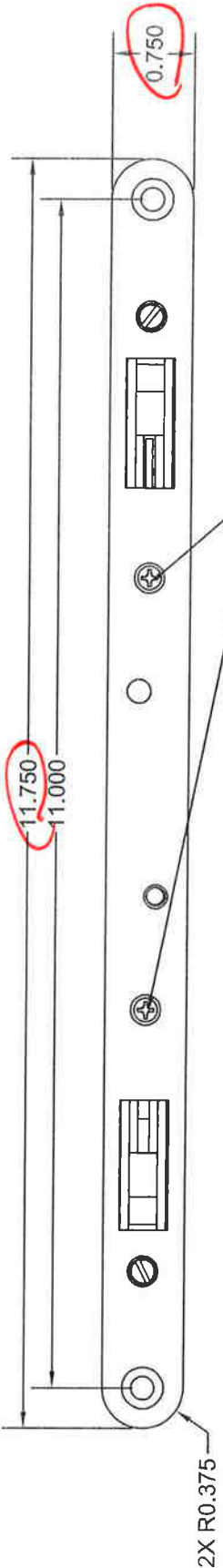


DOOR HARDWARE  
 AMESBURY GROUP  
 111 West Algonquin Street, Sioux Falls, SD 57105  
 Phone: (605) 336-1011 FAX: (605) 336-4239

Drawing Title: KEEPER GEMINI 1" TALL

Location: 2778.law

SHEET 1 OF 1  
 Rev: C



**CTI**  
 ESTIFIED LABORATORIES  
 ARCHITECTURAL DIVISION  
 7252 NARCOOSSEE ROAD  
 ORLANDO, FLORIDA 32822

CTLA No. 2054w-1  
 Date Verified: 5/21/10  
 2/20/10

**NOTES:**

1. ANTISLAM PIN MINIMUM DEPRESS AMOUNT IS 0.060". MAXIMUM DEPRESS AMOUNT IS FLUSH WITH TRIMPLATE.
2. TRIMPLATE SCREW (ITEM #3) TORQUE IS 10-14 IN-LBS.

Part Number Matrix			
ASSEMBLY #	LOCK # (ITEM 1)	TRIMPLATE # (ITEM 2)	SCREW # (ITEM 3)
2817-00	2777-00	2450-00	2539-00
2817-01	2777-00	2450-01	2539-01
2817-03	2777-00	2450-03	2539-03
2817-06	2777-00	2450-06	2539-06
2817-12	2777-00	2450-12	2539-12
2817-84	2777-84	2450-84	2539-84

The information contained in this drawing is the property of Amesbury Group, Inc. - BSI Hardware and is confidential and proprietary to the company. This drawing is not to be copied or reproduced in whole or in part without the express written permission of the company. The information contained in this drawing is to be used solely for the benefit of Amesbury Group, Inc. - BSI Hardware and is not to be disclosed or used in the performance of services or manufacture of goods for any other party without the express written permission of Amesbury Group, Inc. - BSI Hardware.

Date	Revision	#	ECN #	By
01/04/07	CREATED PRINT WITH PART NUMBER MATRIX.	A	0342	NG

Date:	1/4/2007
Drawn:	ng
Scale:	N/A
Units:	INCH
Tolerance	
Decimat:	± .010
Angular:	± 1°

Part #:	2817
---------	------

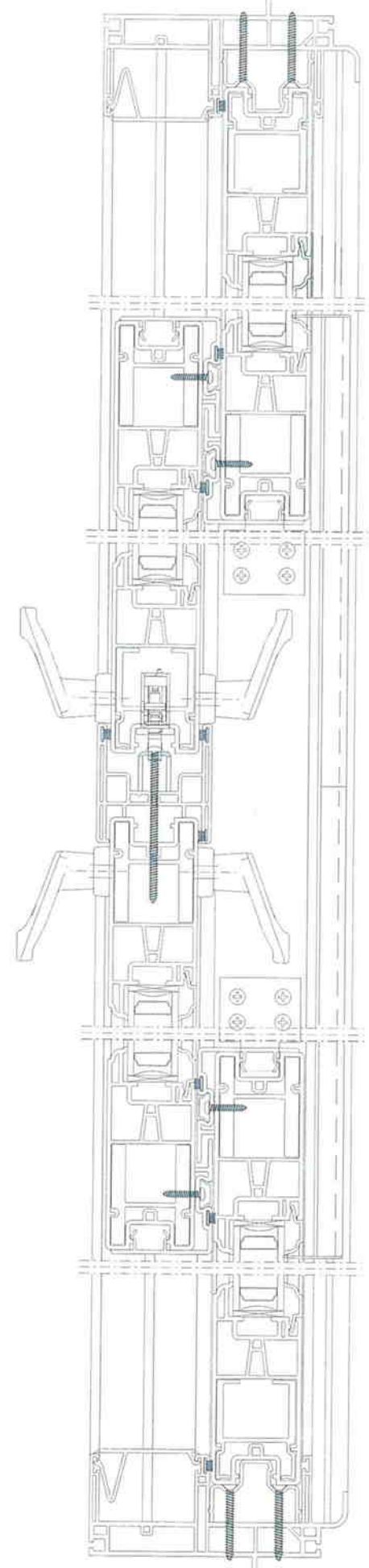
DOOR HARDWARE  
 AMESBURY GROUP  
 1111 West Alhambra Street, Littleton, CO 80120  
 Phone: (303) 336-1011 FAX: (303) 336-9429  
 Date: 05/21/10  
 Location: 2817/lock.ltw

Drawing Title: **GEMINI II LOCK W/ 2450 TRIMPLATE**

Sheet of: \_\_\_\_\_  
 Rev: \_\_\_\_\_  
 A

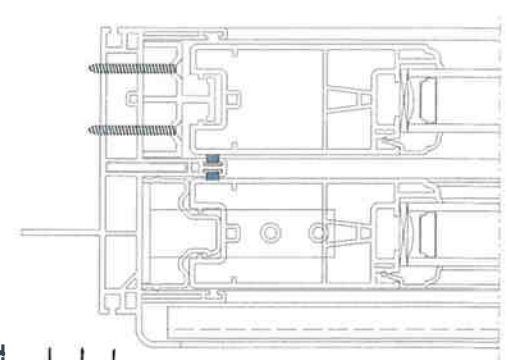
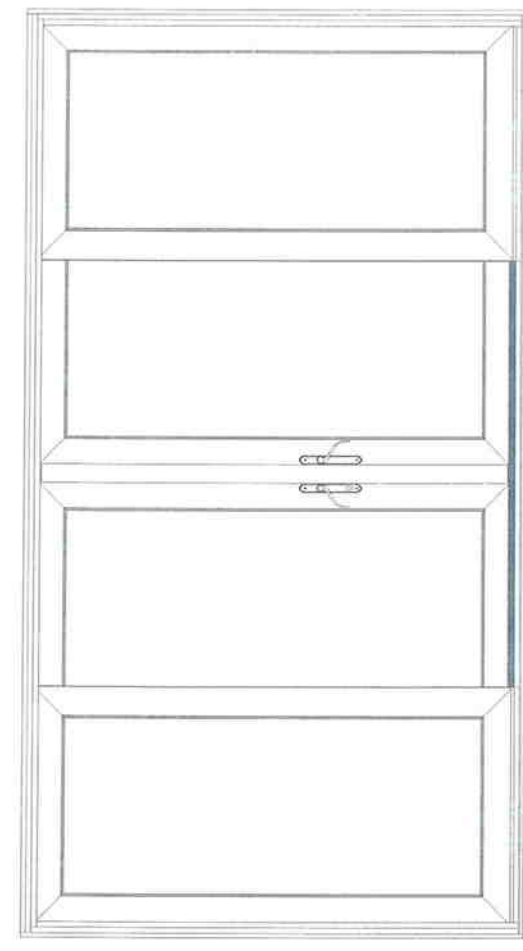
NO.	DESCRIPTION	DATE	APPROVED BY

ALL DIMENSIONS SHOWN SHALL BE AS INDICATED BY THE DESIGN ACTIVITY.



**CTL** CERTIFIED TESTING LABORATORIES  
**ARCHITECTURAL DIVISION**  
 7252 NARCOSSE ROAD  
 ORLANDO, FLORIDA 32822

CTLA No. 205406-4-W-1  
 Date Verified: 8/21/10  
 Verified By: [Signature]



<b>CONFIDENTIAL</b>	DATE: 08/21/10	PROJECT: 603,620 PD - 005
NO. OF PAGES: 1	NO. OF SHEETS: 1	SCALE: 1/8" = 1'-0"
DESIGNED BY: [Signature]	CHECKED BY: [Signature]	DATE: 08/21/10
PROJECT: 603,620 PD - 005	NO. OF SHEETS: 1	SCALE: 1/8" = 1'-0"
DATE: 08/21/10	DESIGNED BY: [Signature]	CHECKED BY: [Signature]

NOTES:  
 1. REFER TO GENERAL SPECIFICATIONS FOR WINDOW, DOOR, GLASS AND GLAZING.